



Serving the South West & beyond

Ocular Anatomy

Tim Knott

Ocular anatomy: What you really need to know!

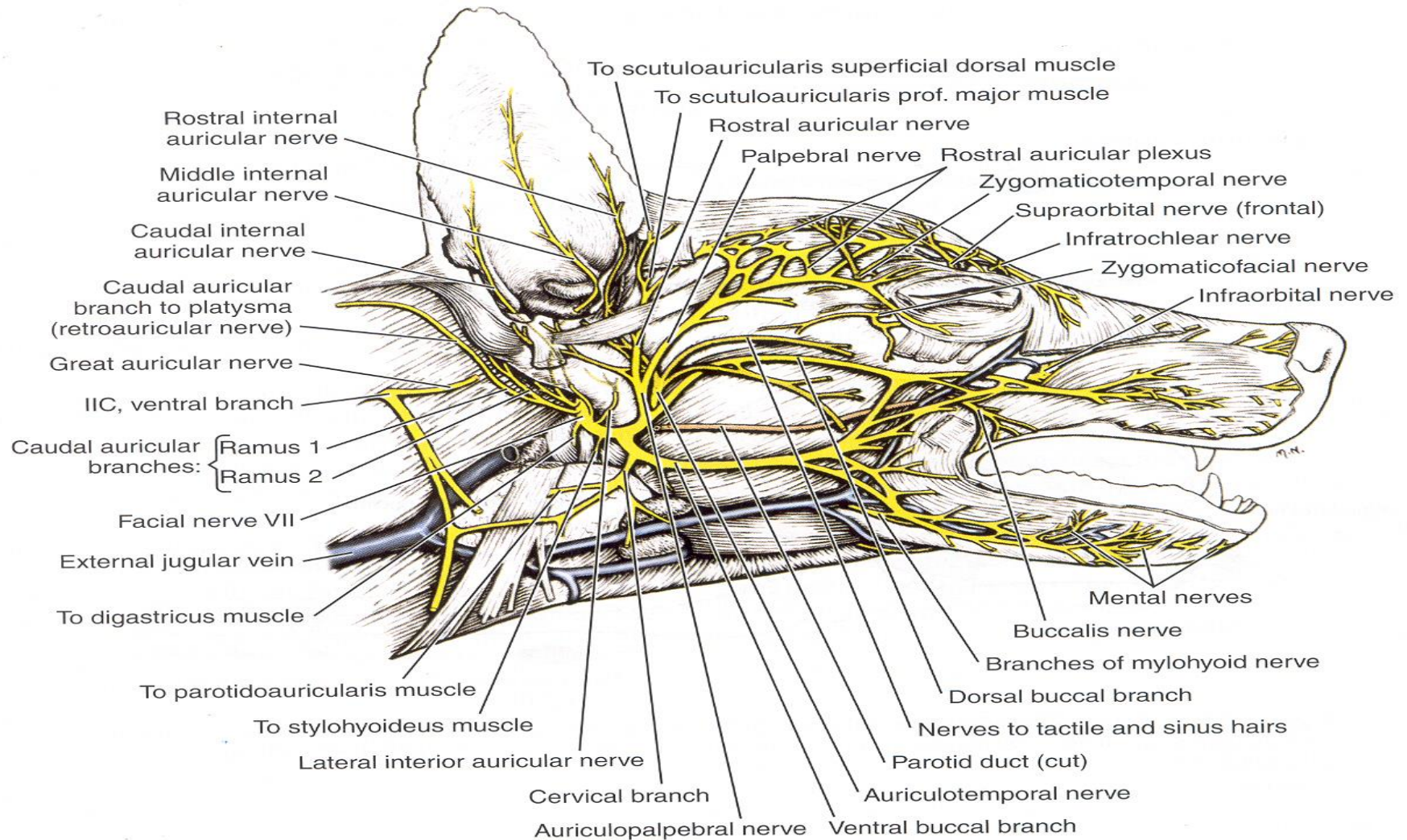


Figure 1-25. Superficial branches of the facial and trigeminal nerves in the dog, lateral aspect. (Modified from Evans HE [1993]: Miller's Anatomy of the Dog, 3rd ed. Saunders, Philadelphia. © Cornell University 1964.)

Anterior Segment:

Cornea

Anterior chamber

Iris

Posterior chamber

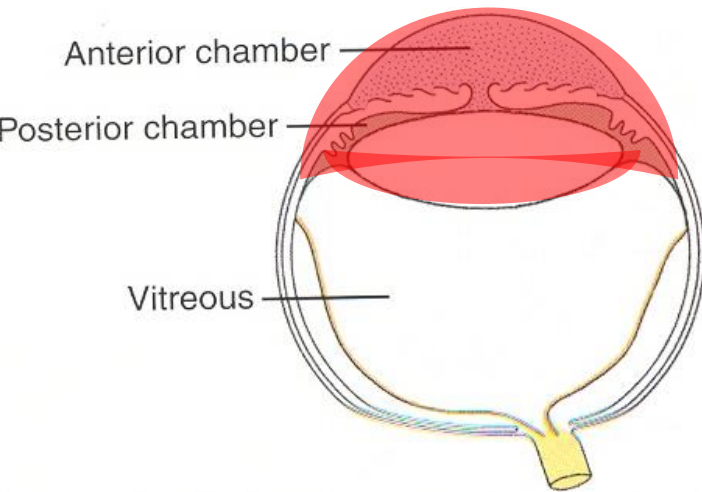
Lens

Posterior Segment

Vitreous

Parsplana

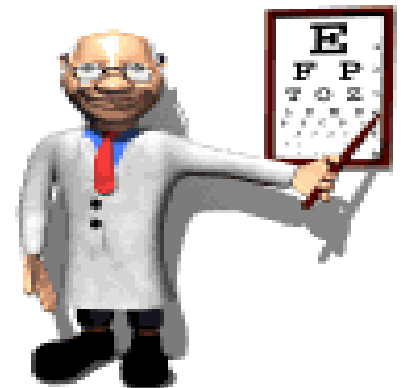
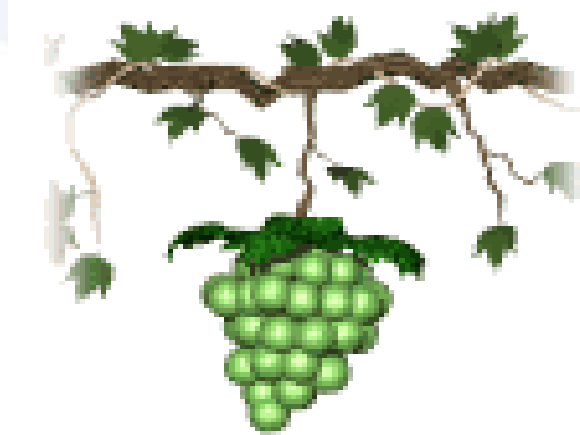
Retina & Choroid



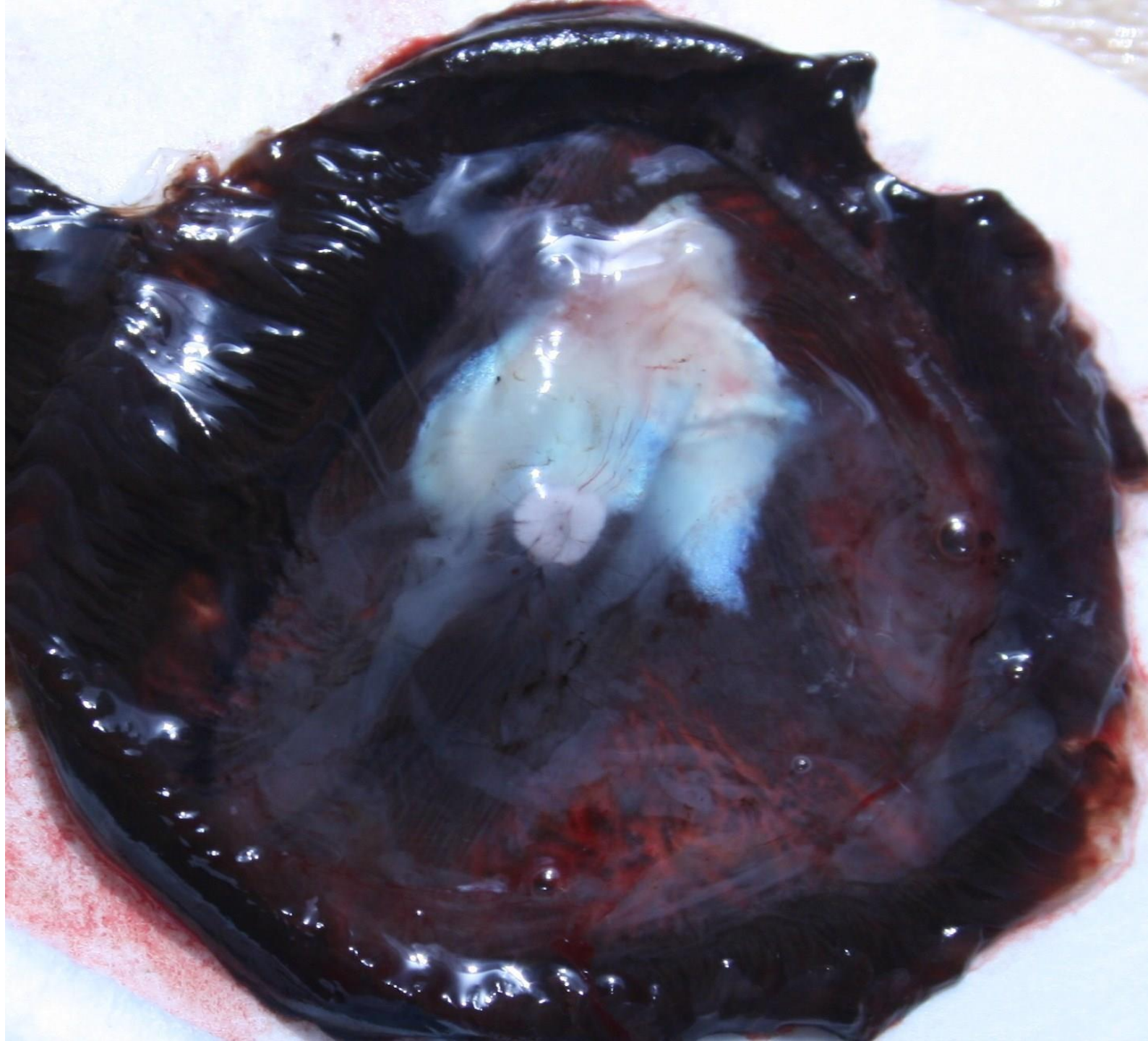
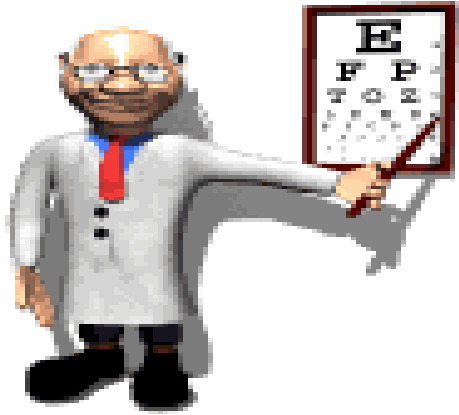


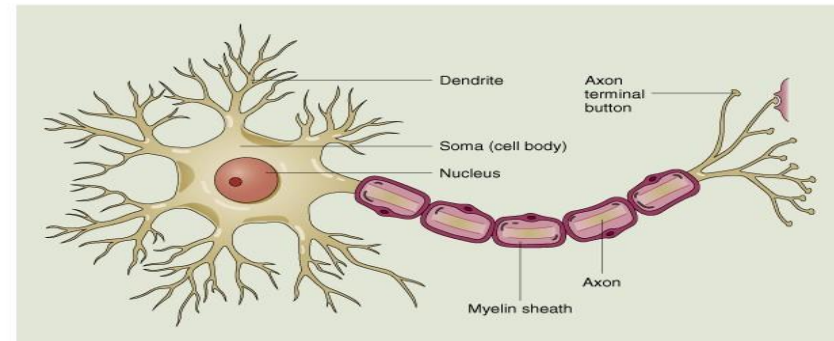
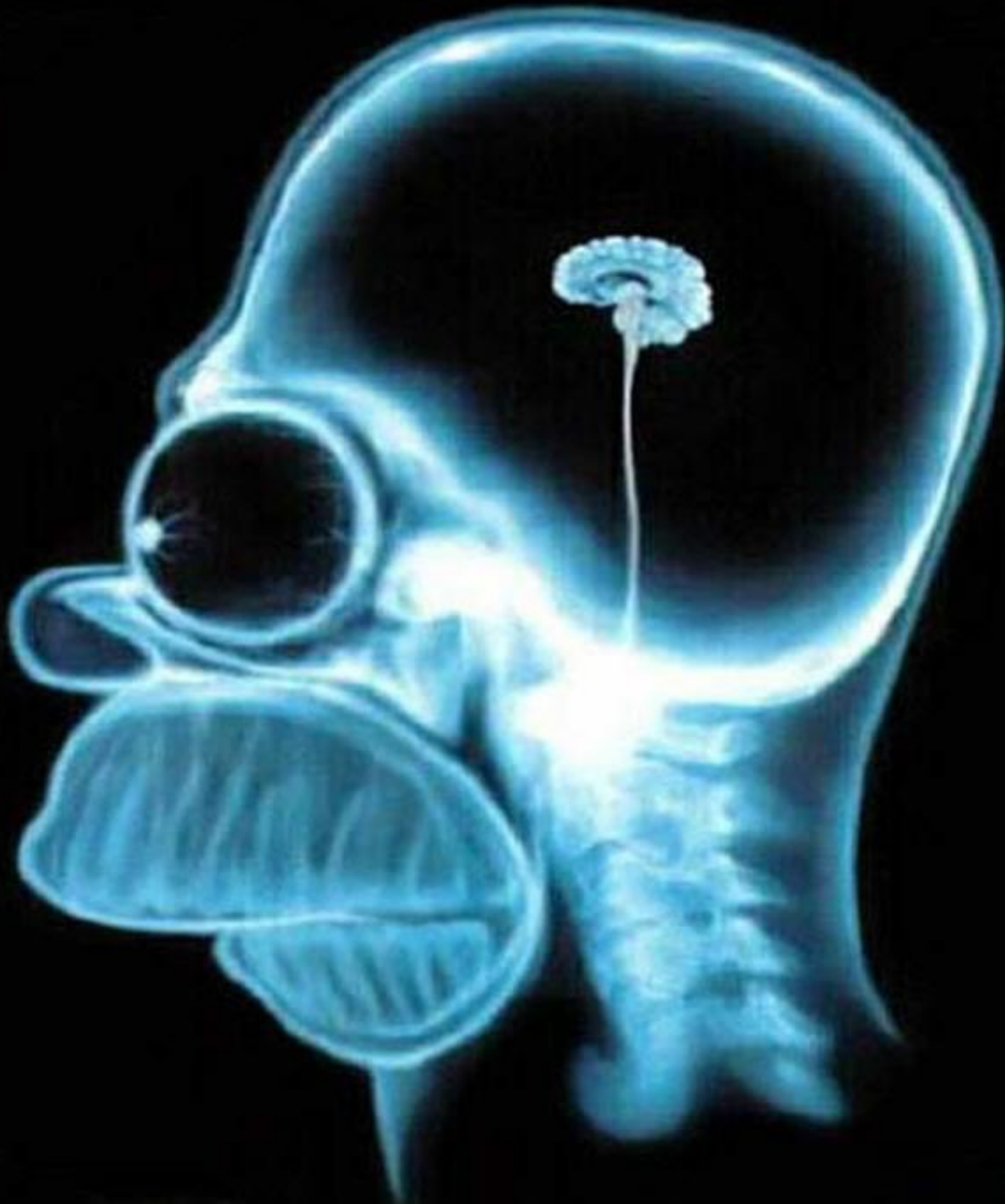
The ocular coats or “tunics”

1. **Inside** - retina – conversion of light to an electrical signal
2. **Middle** - uveal tract - nutrition
3. **Outside** - sclera/cornea - protection



Inner bit

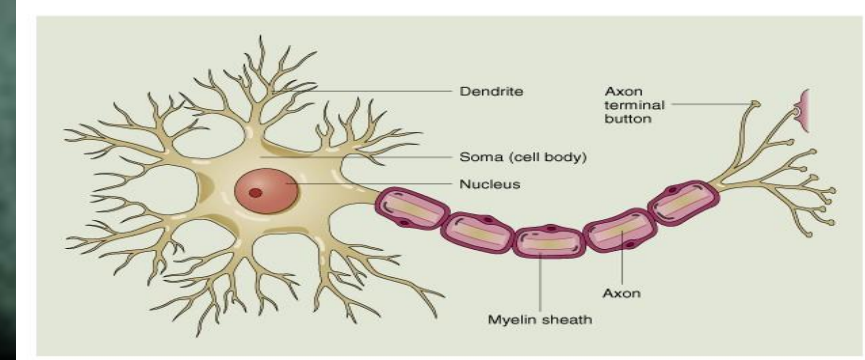
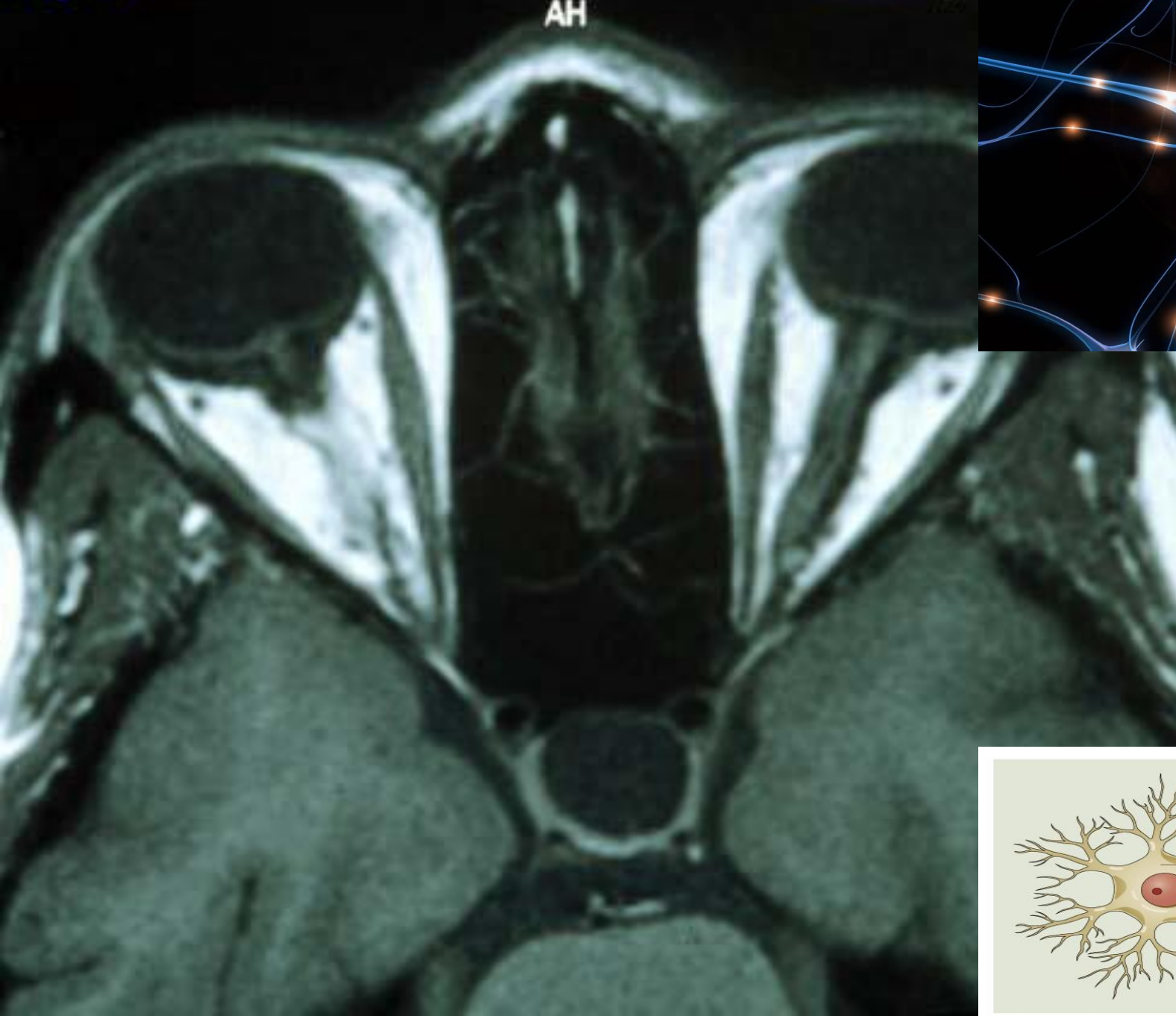




DJO

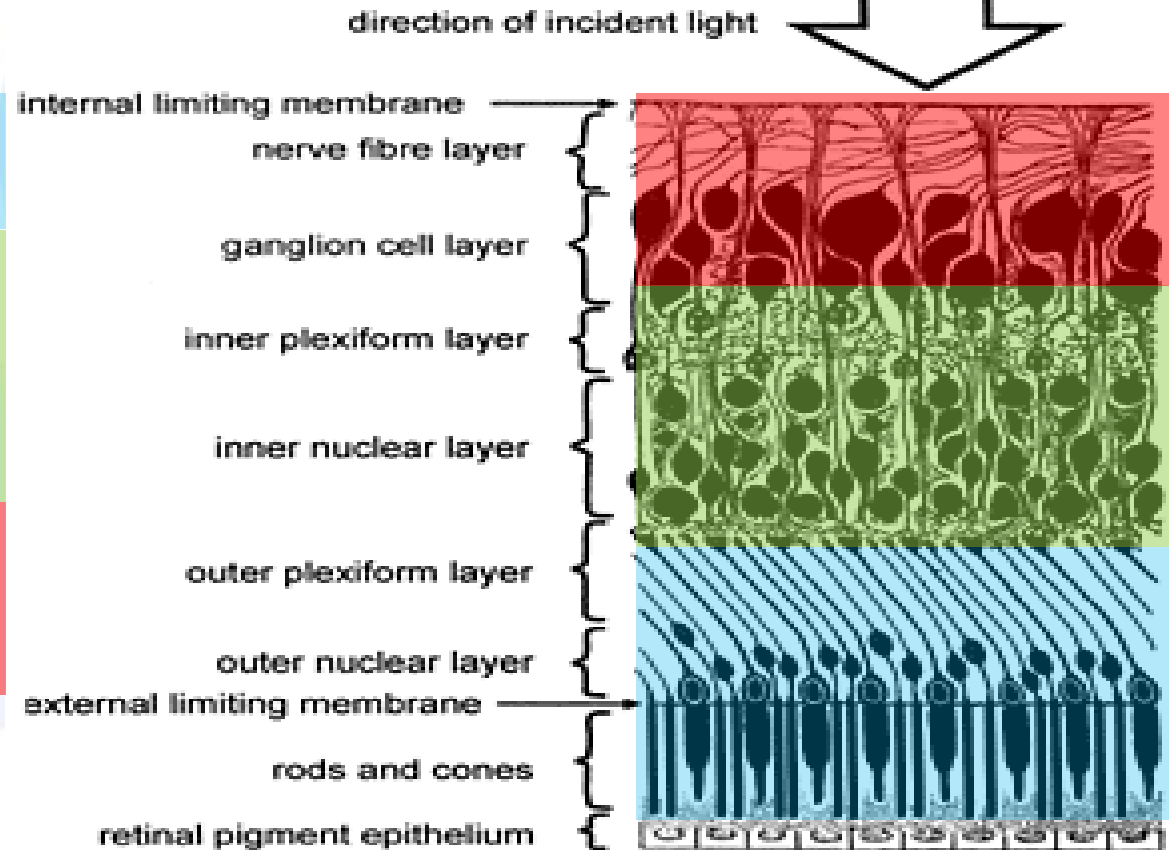
Mass Eye

AH



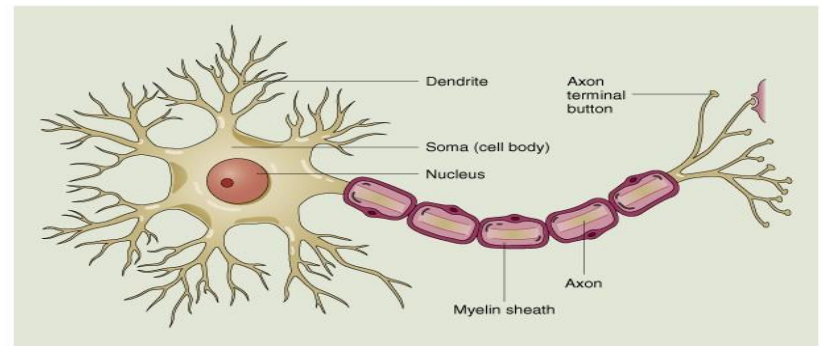
Retina

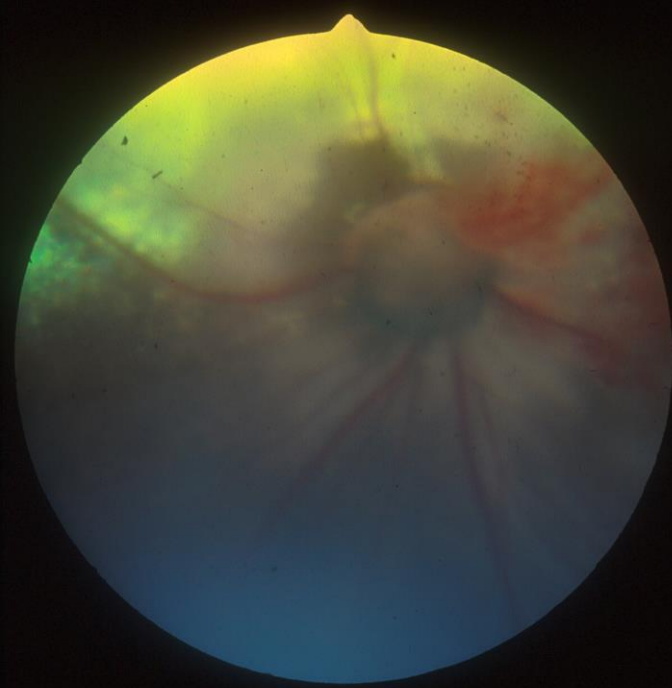
- Photoreceptors
- Amacrine and Hz cells
- Ganglion cells
-





Ganglion cell layer



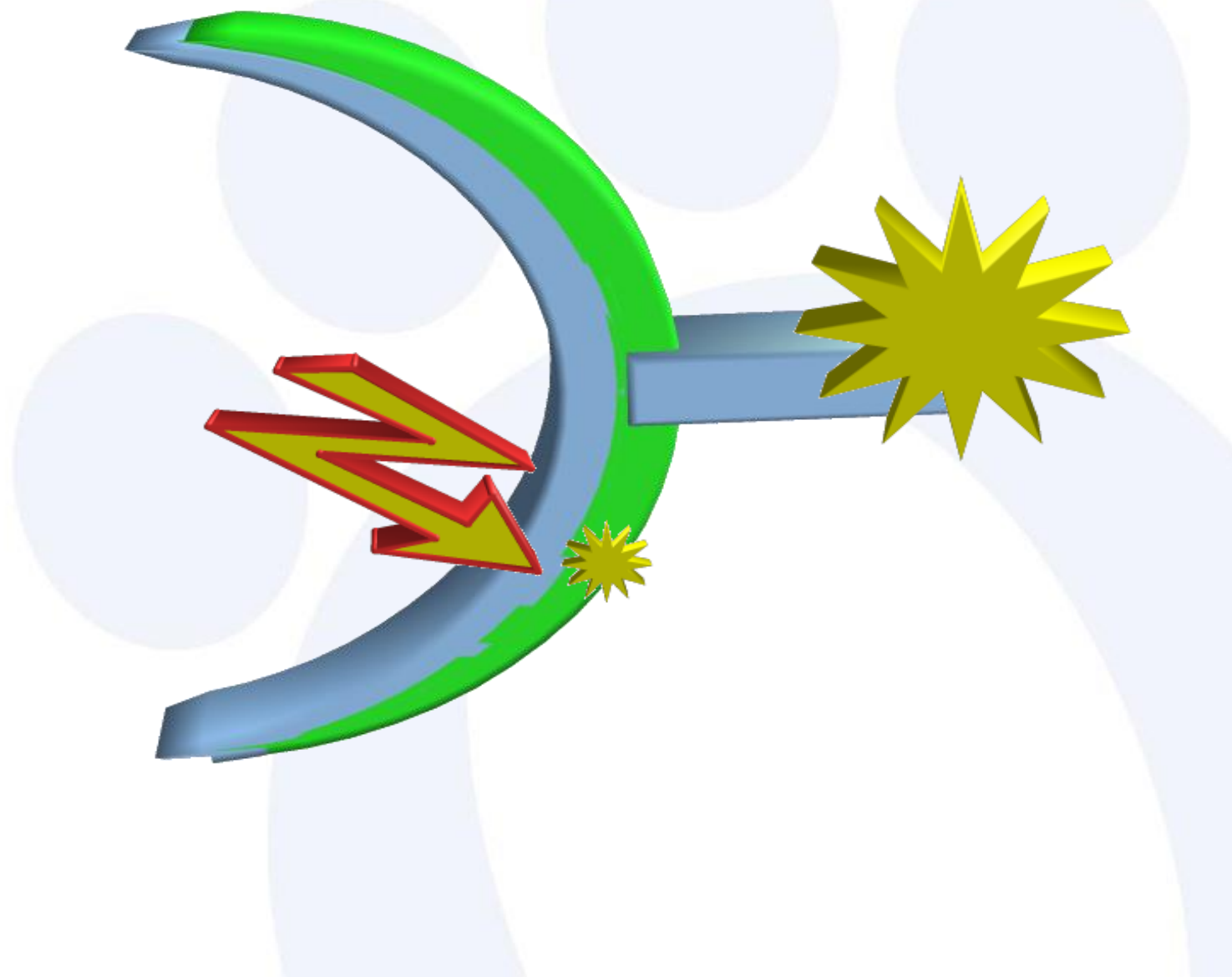


John
Mould

Photoreceptors



Photoreceptors



Decussation

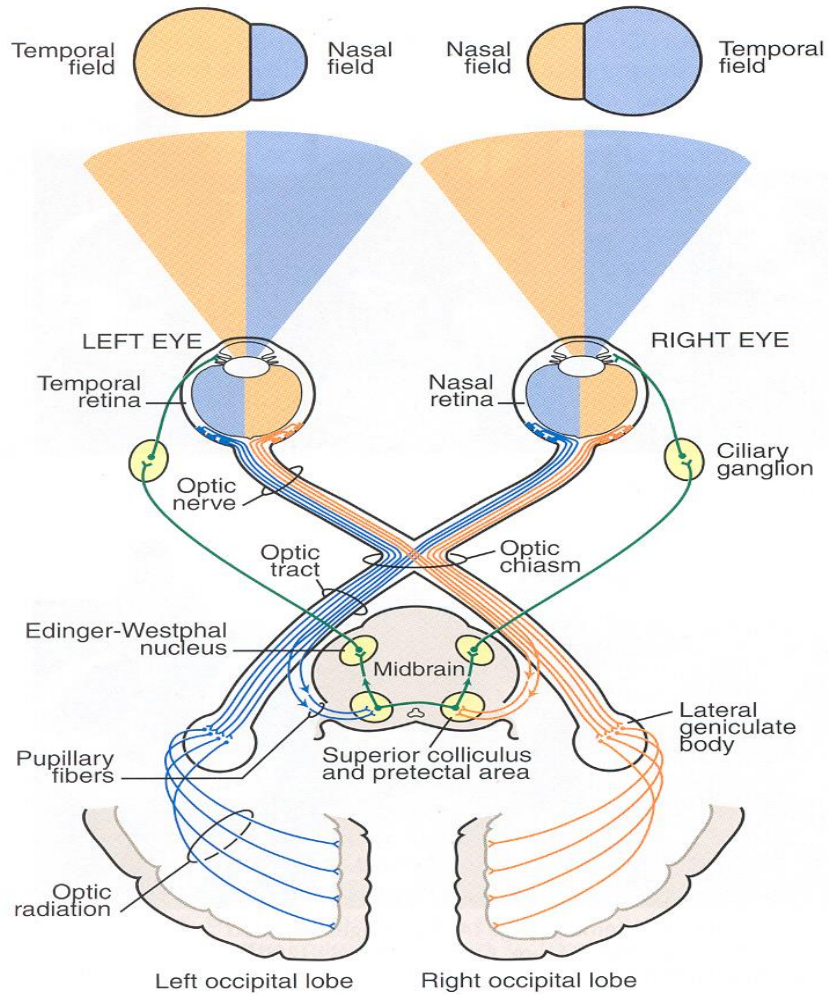
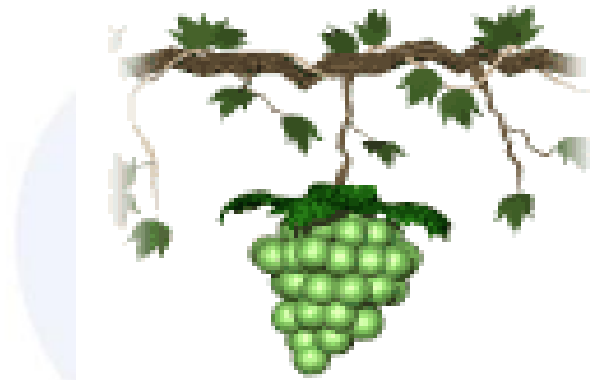


Figure 1-15. The visual pathway.



Hemi-facial neglect

Middle bit

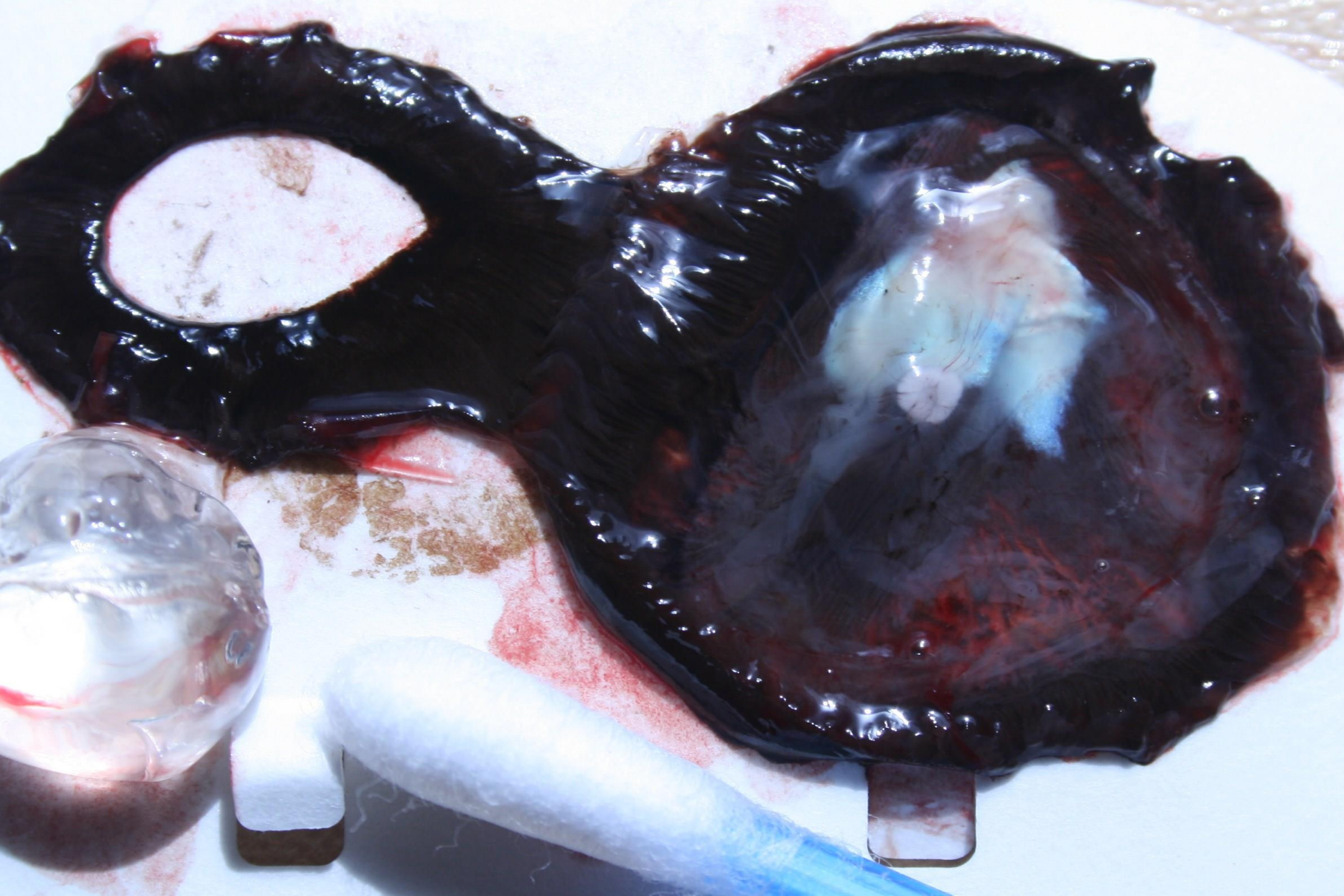


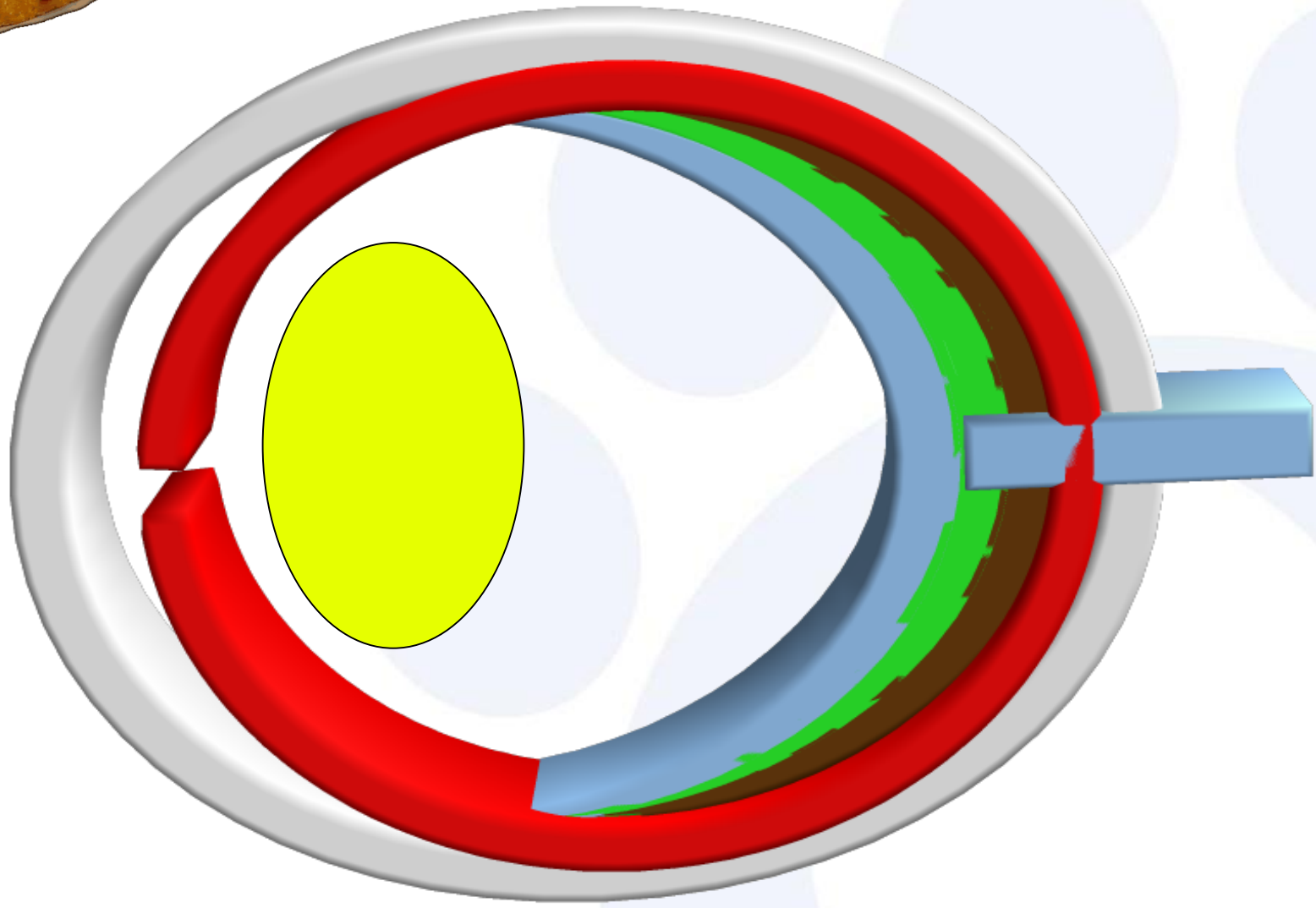
The Uveal tract

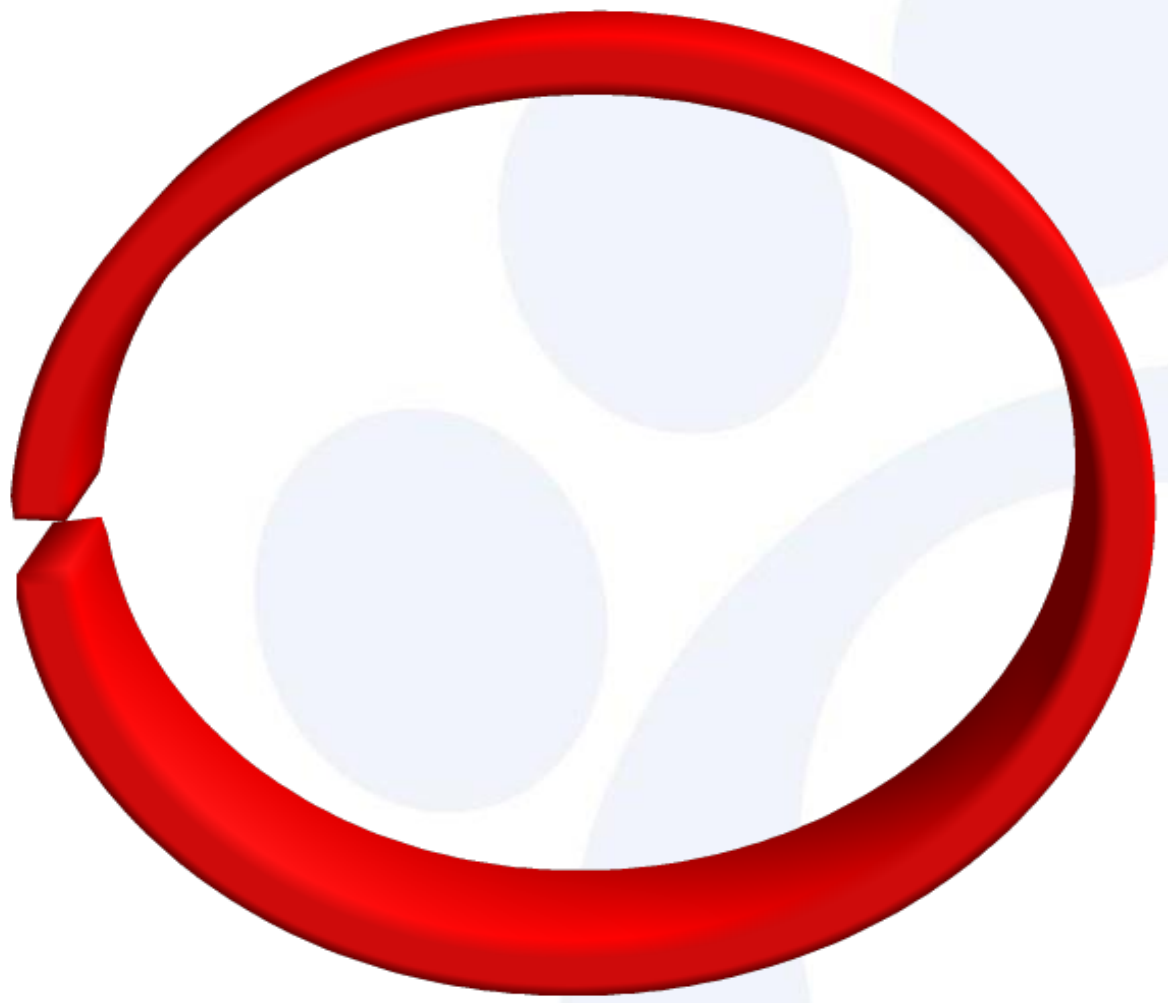


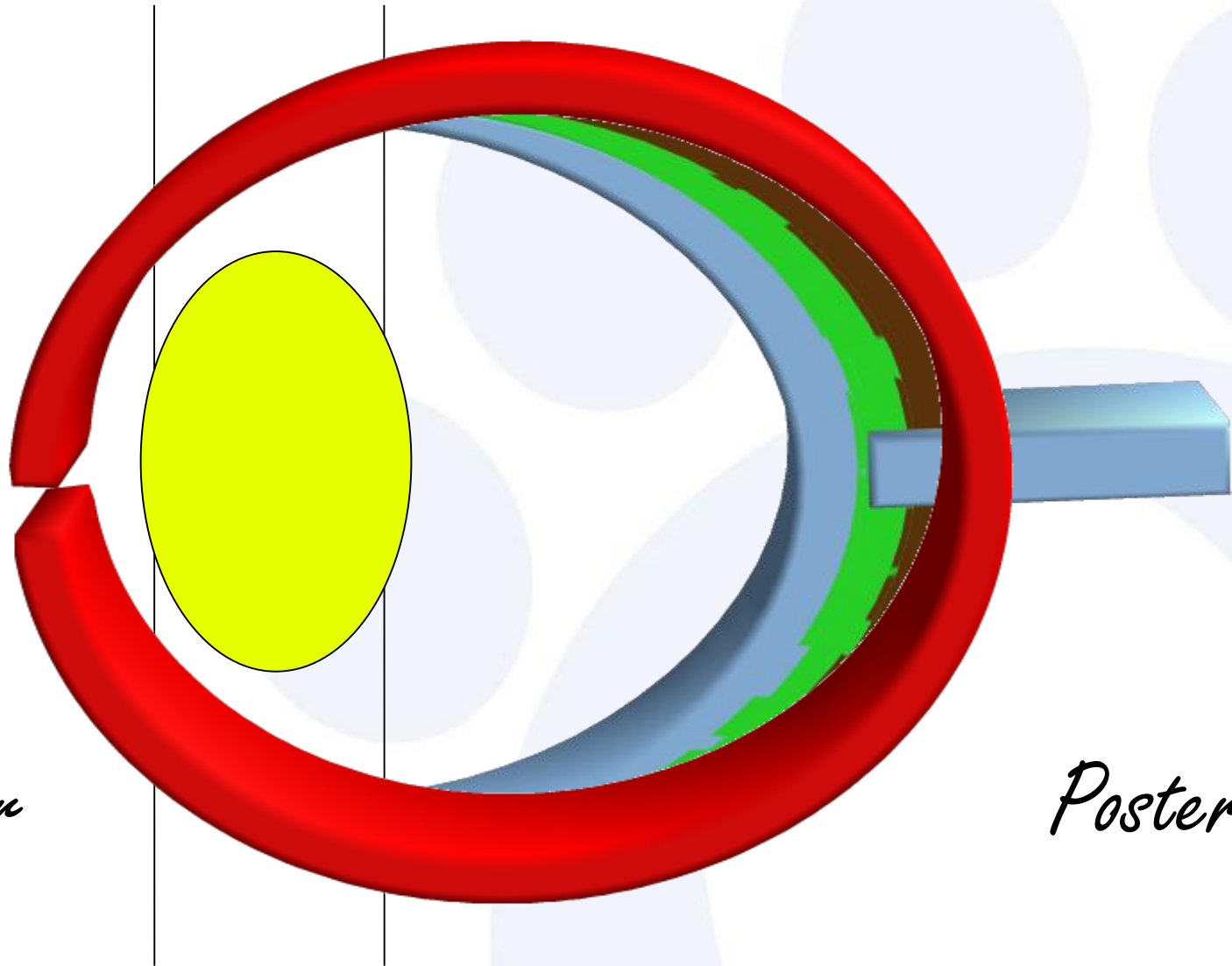
Galen AD129-216











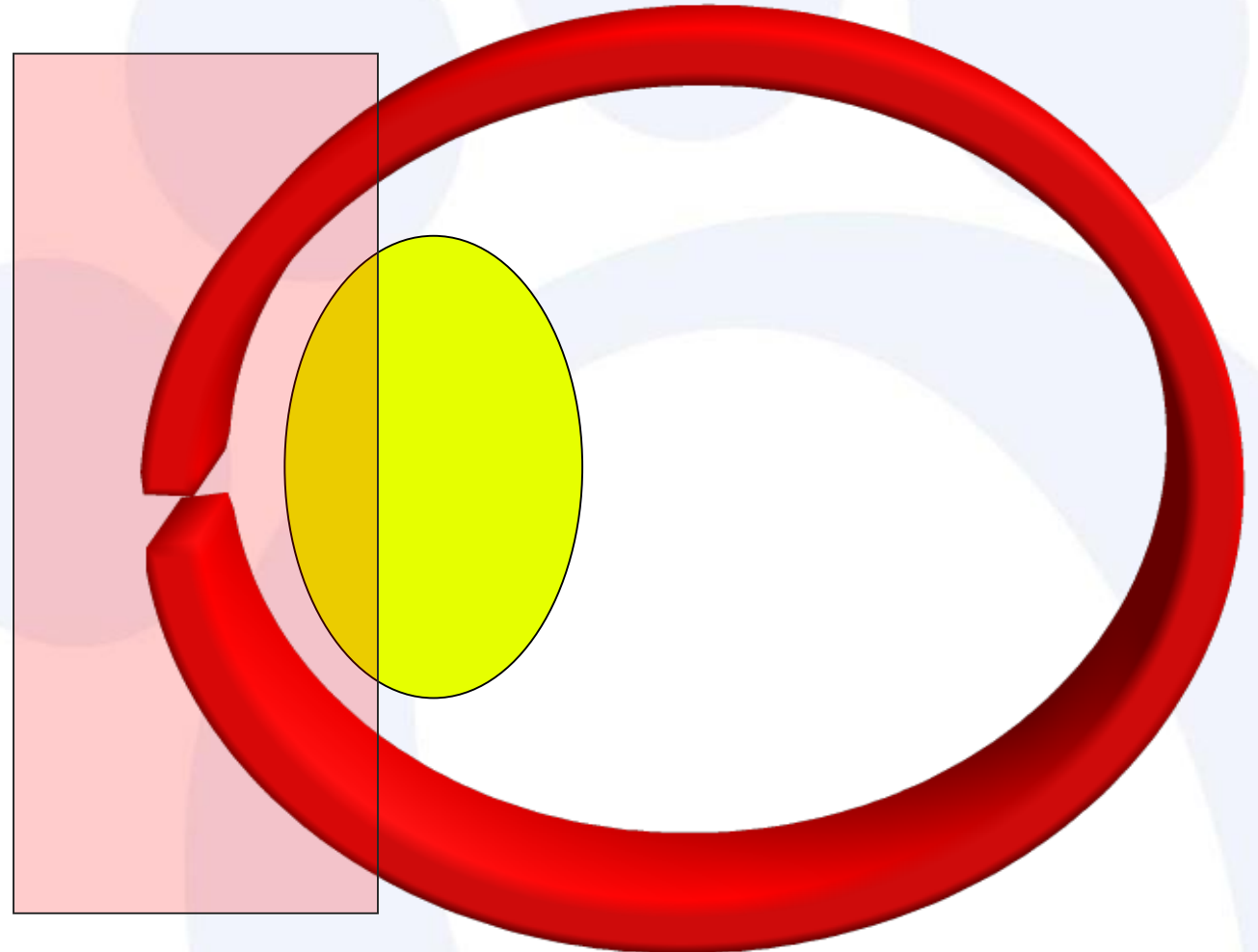
Anterior

Posterior

Intermediate

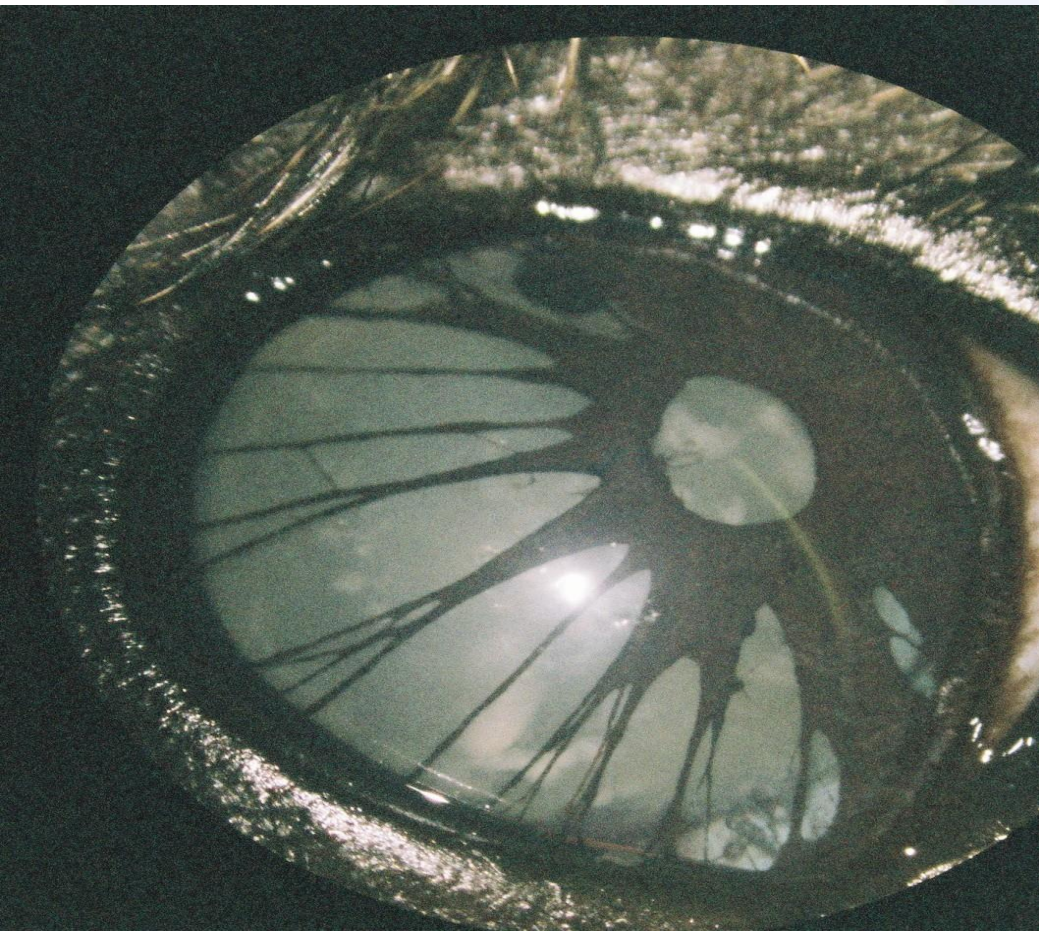


Anterior uvea - iris





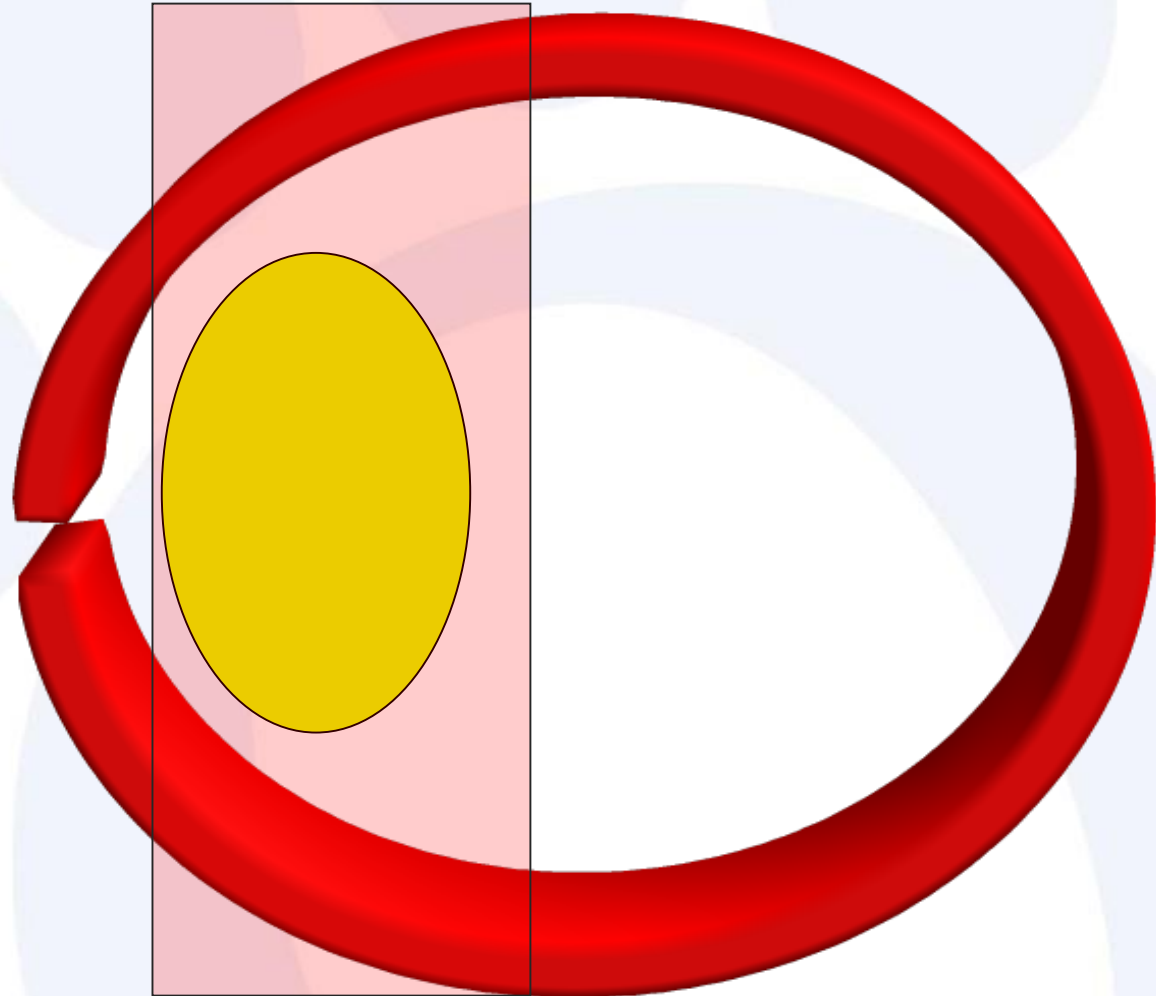
Iris hypoplasia

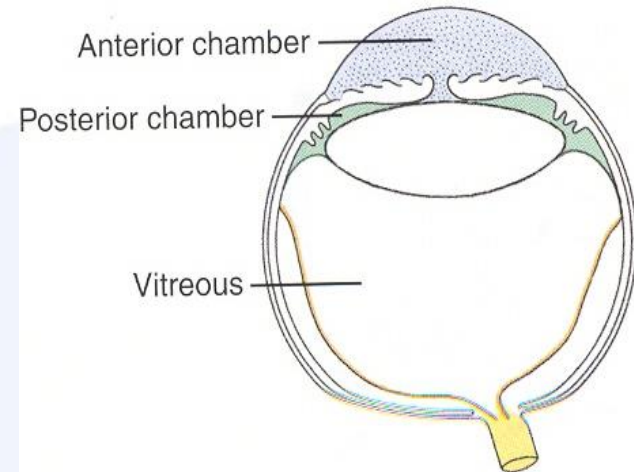


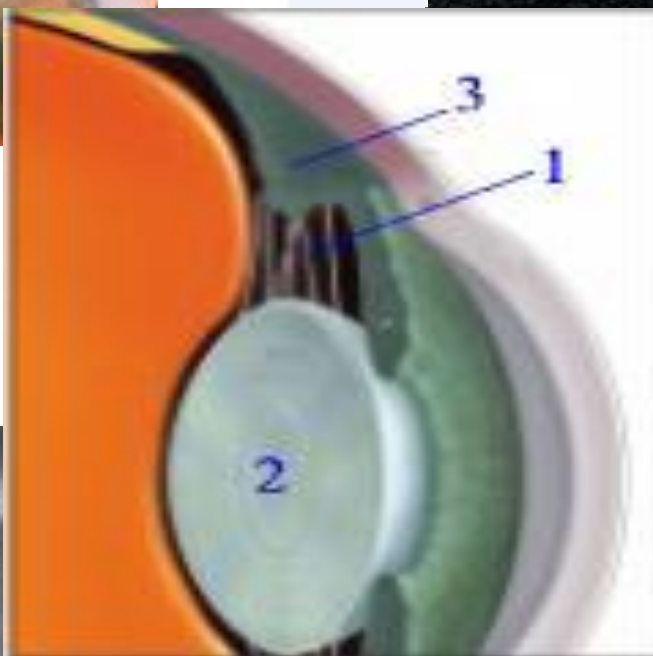
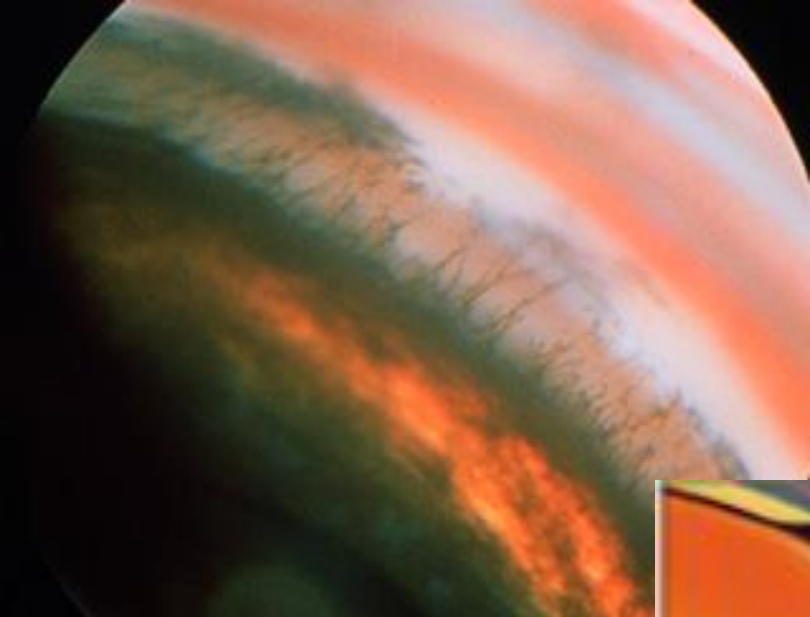
Senile iris degeneration



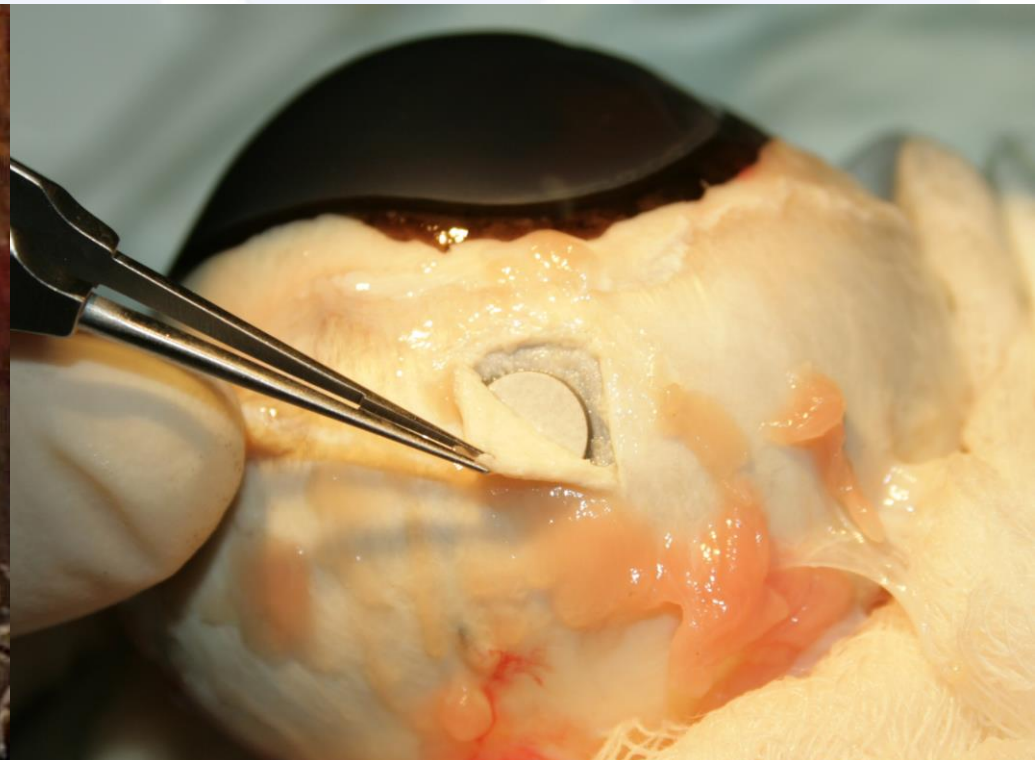
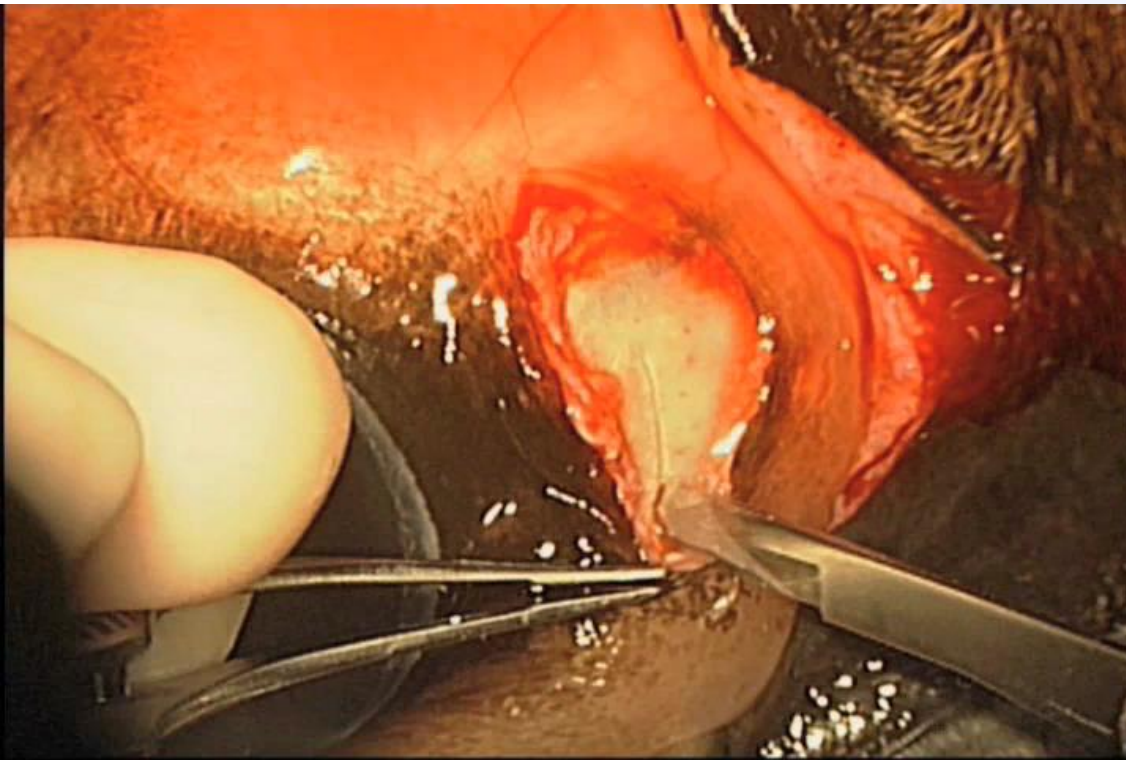
Intermediate uvea



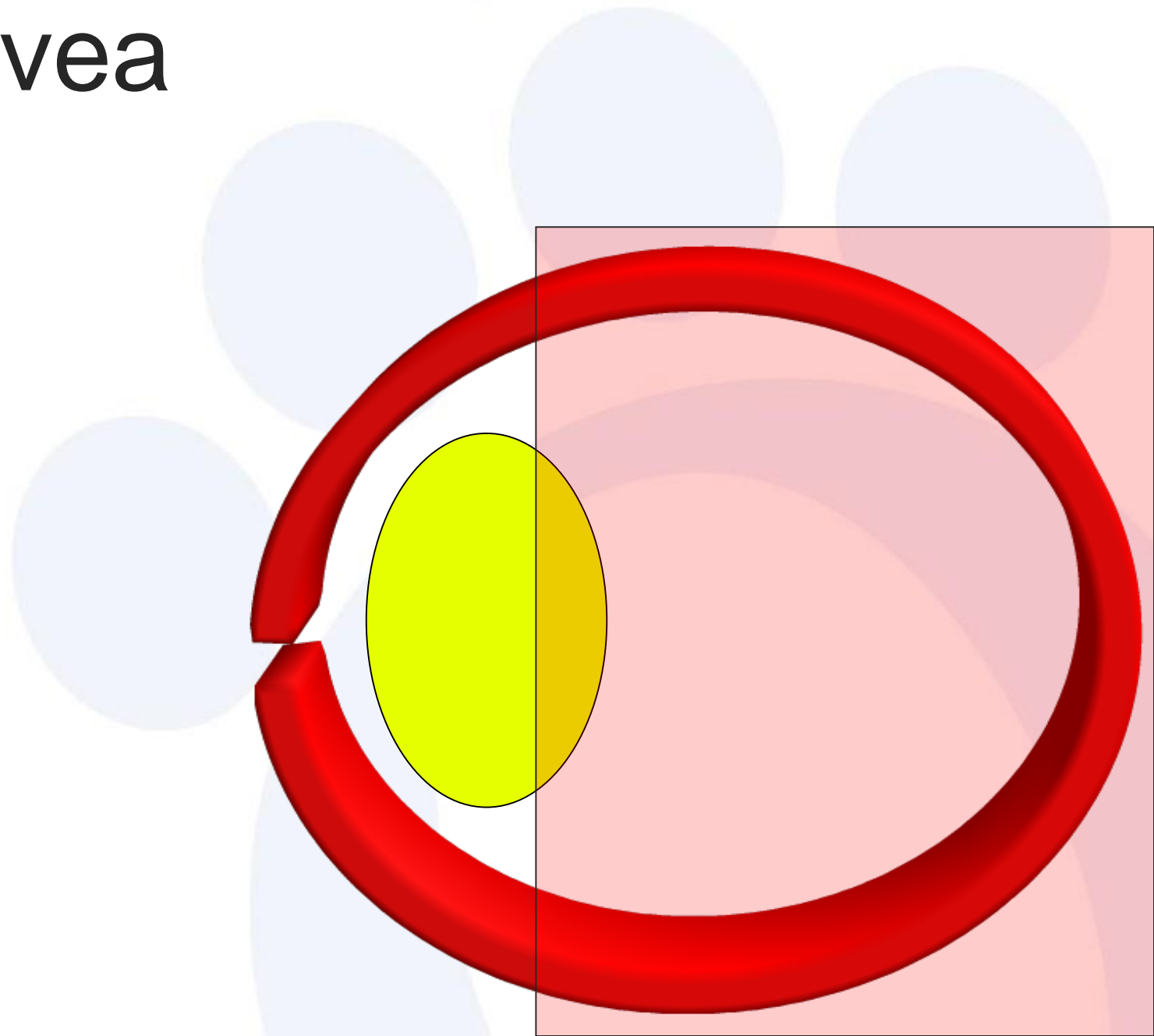




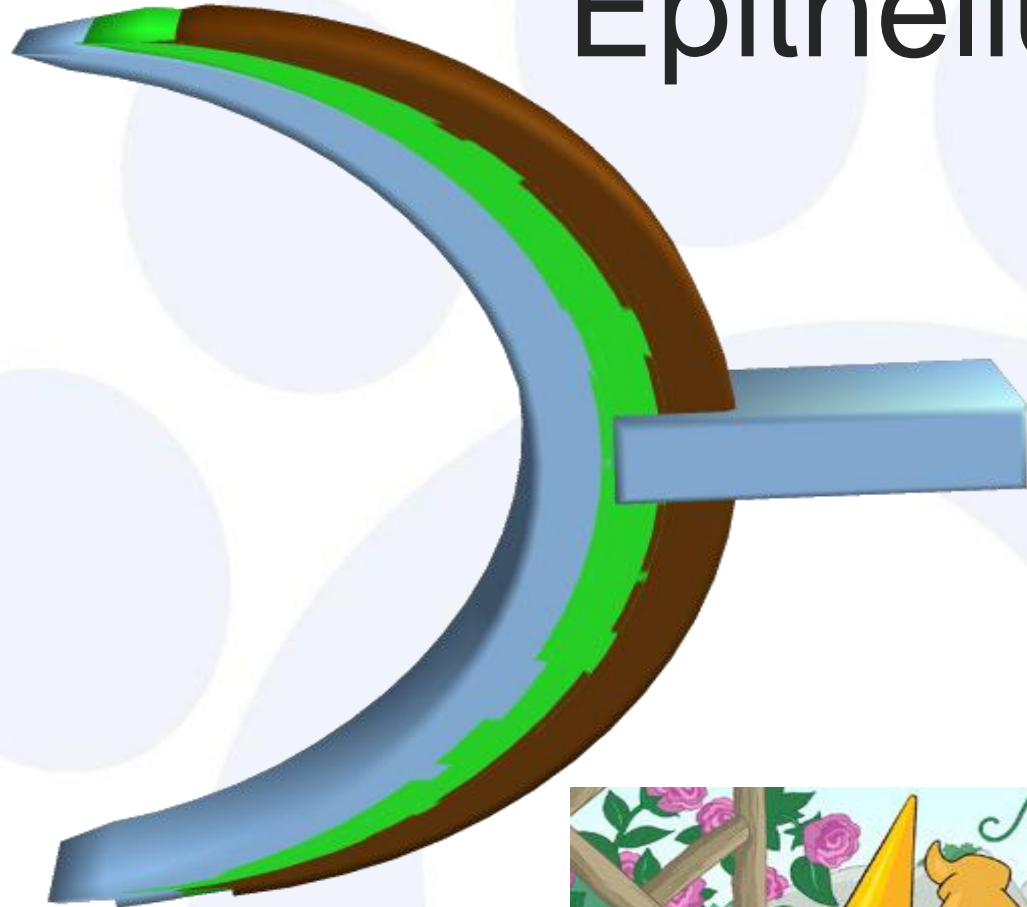
Suprachoroidal cyclosporin implants



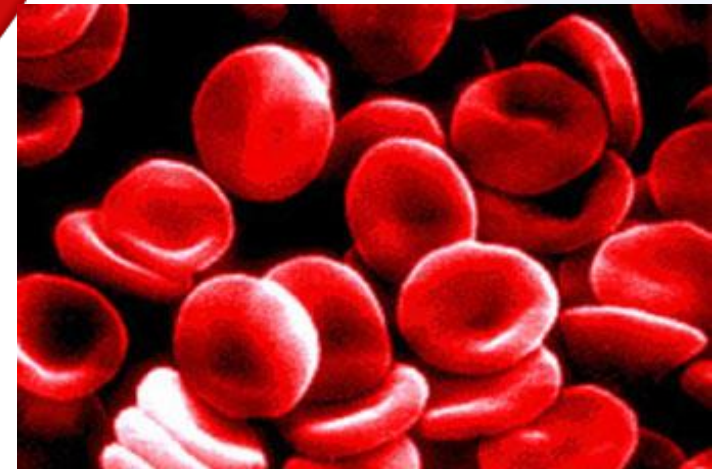
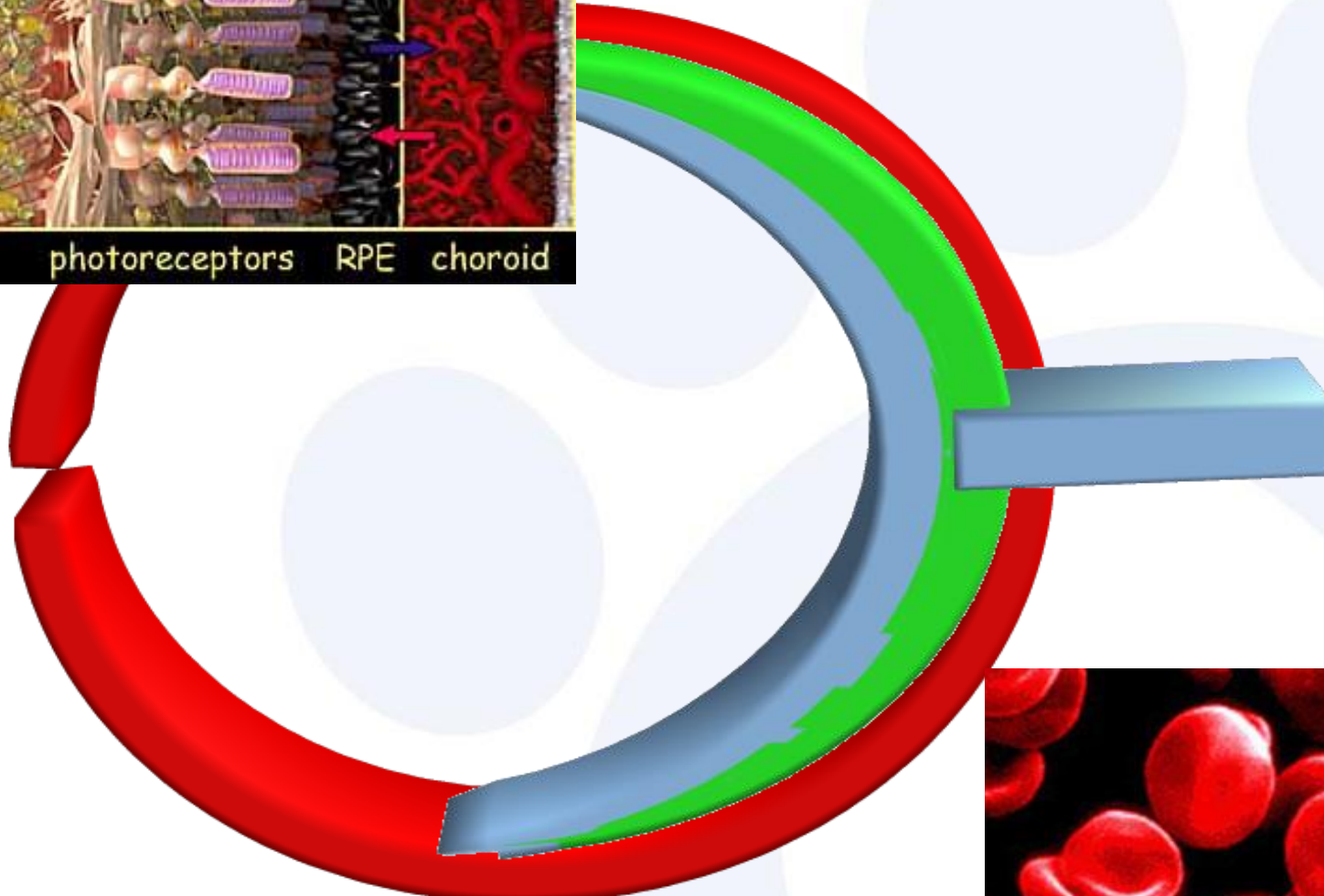
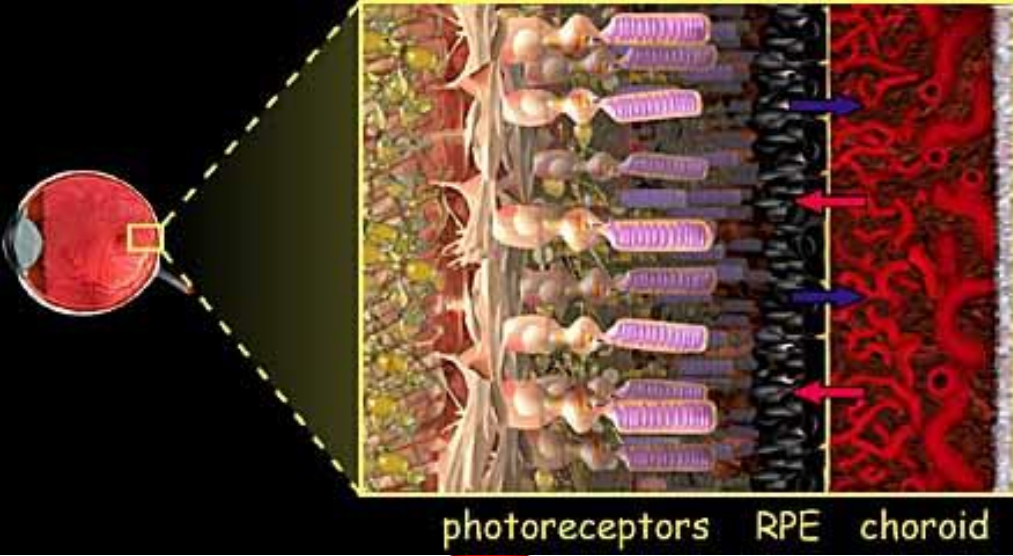
Posterior uvea

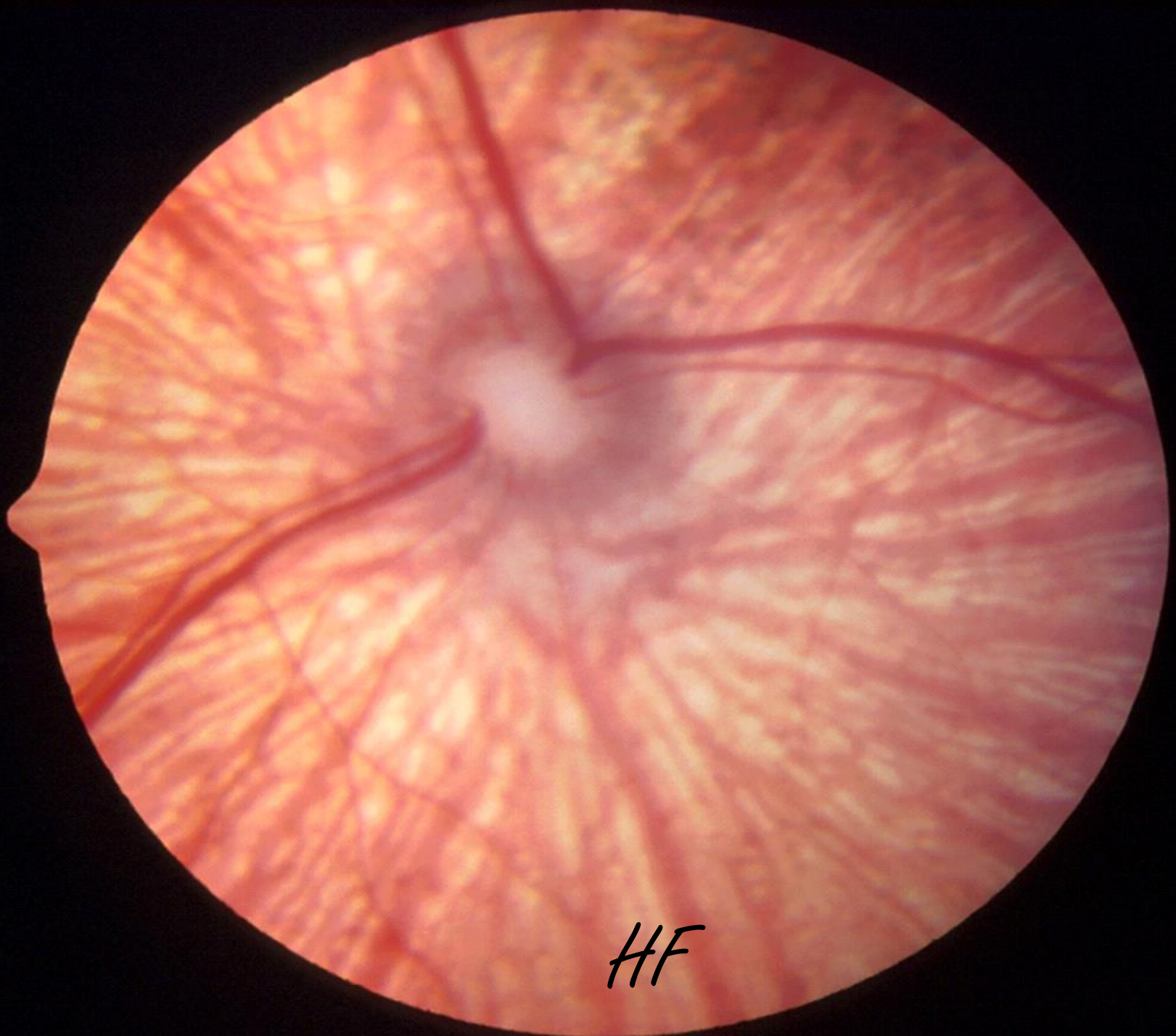


Retinal (Pigment) Epithelium



Choroid

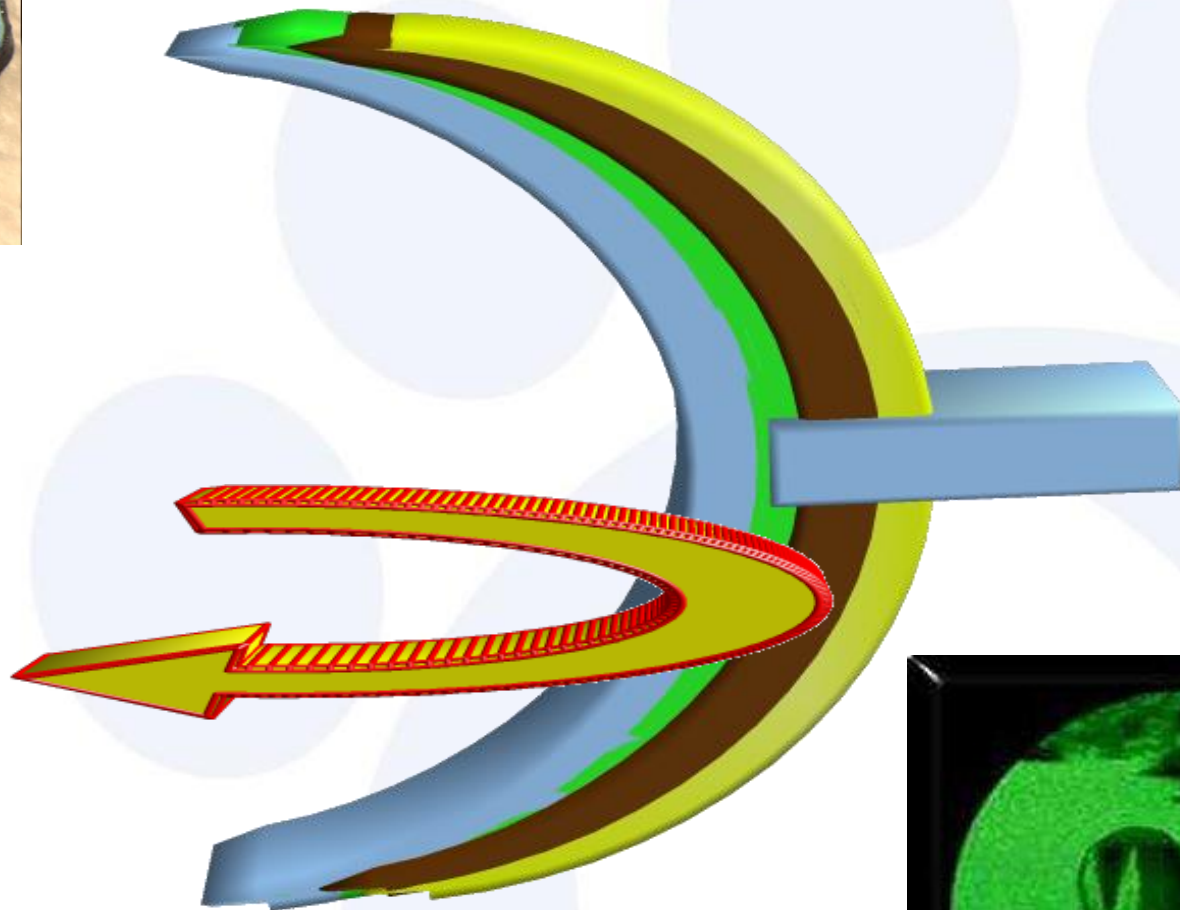


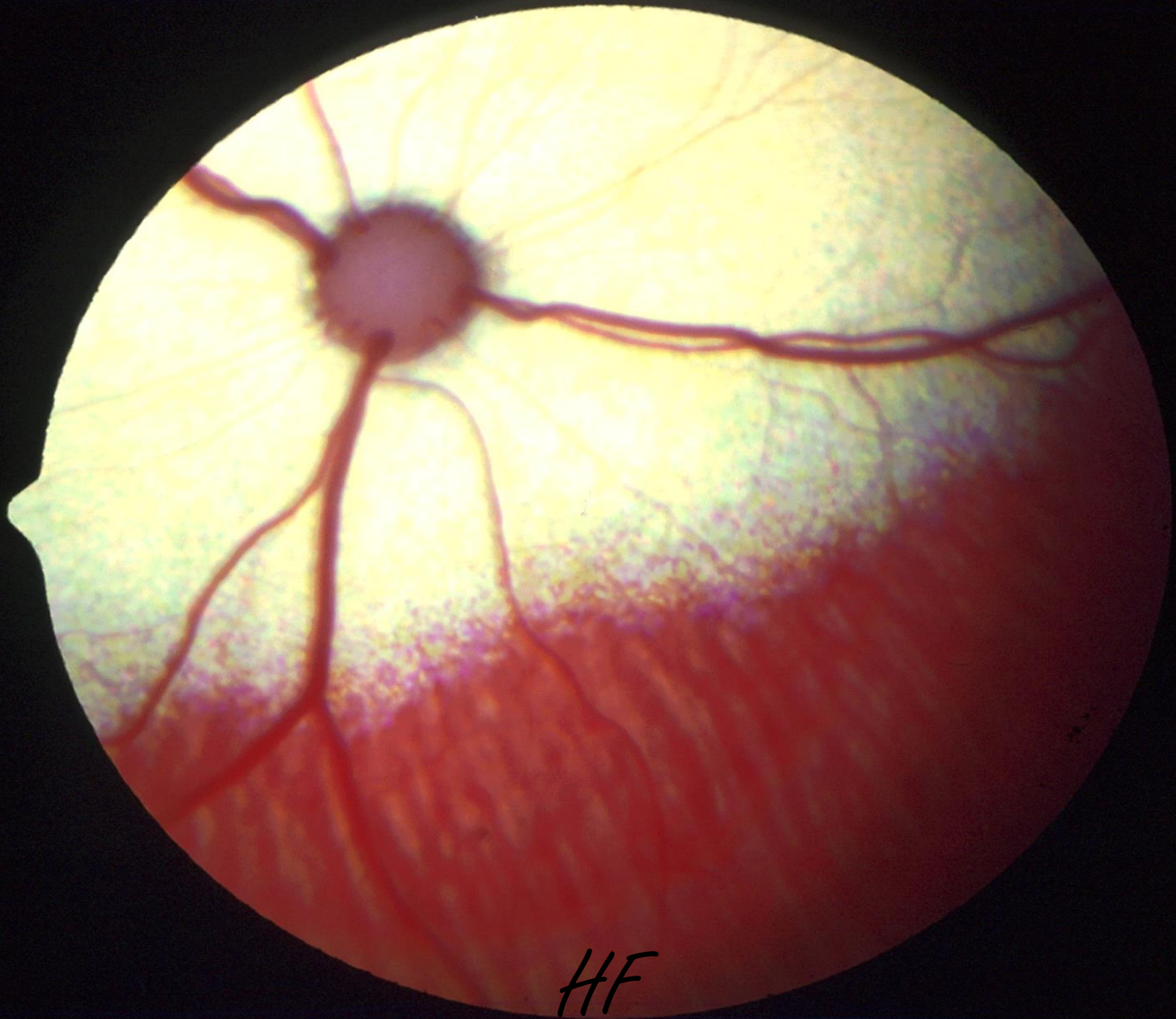


HF

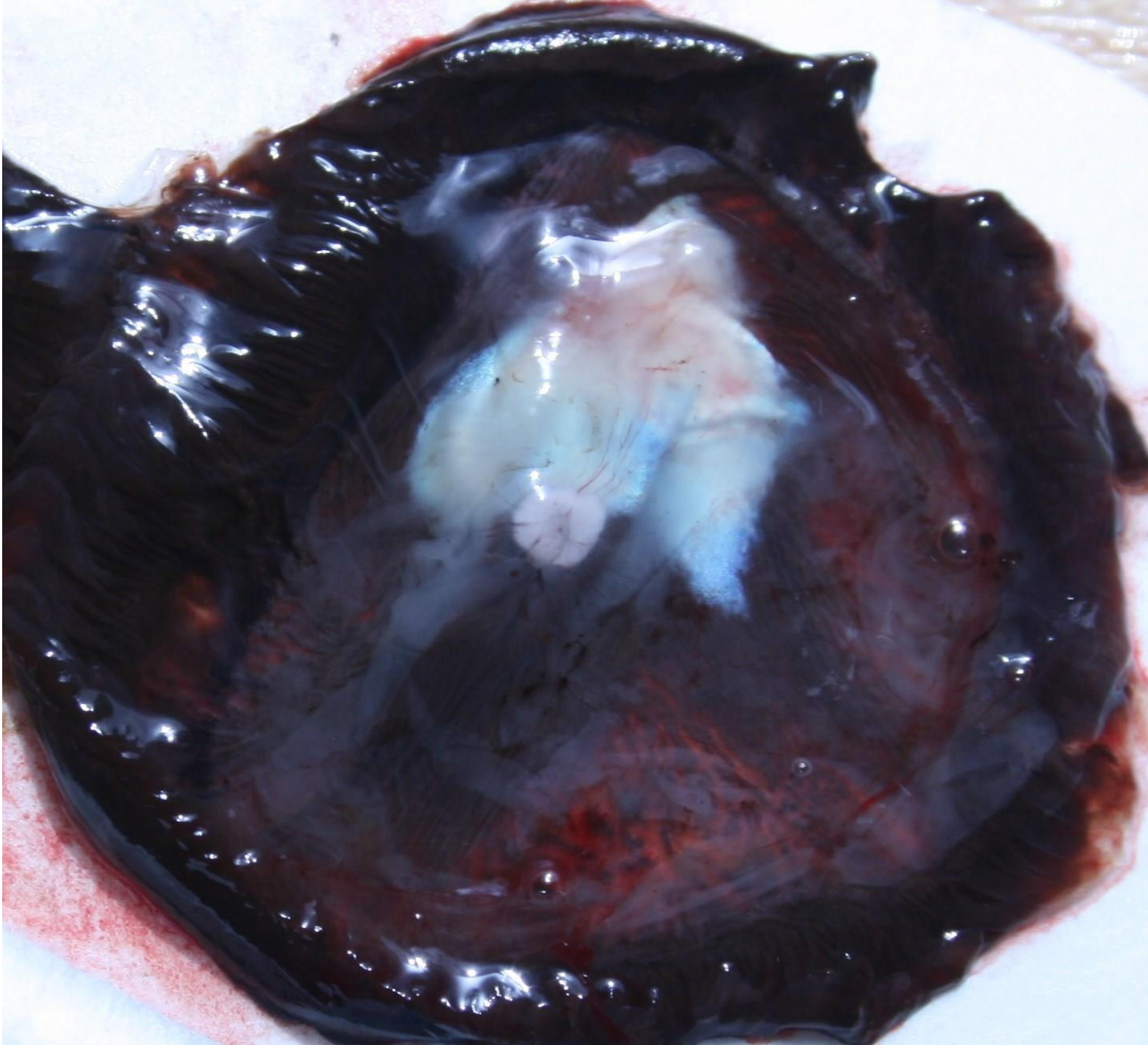


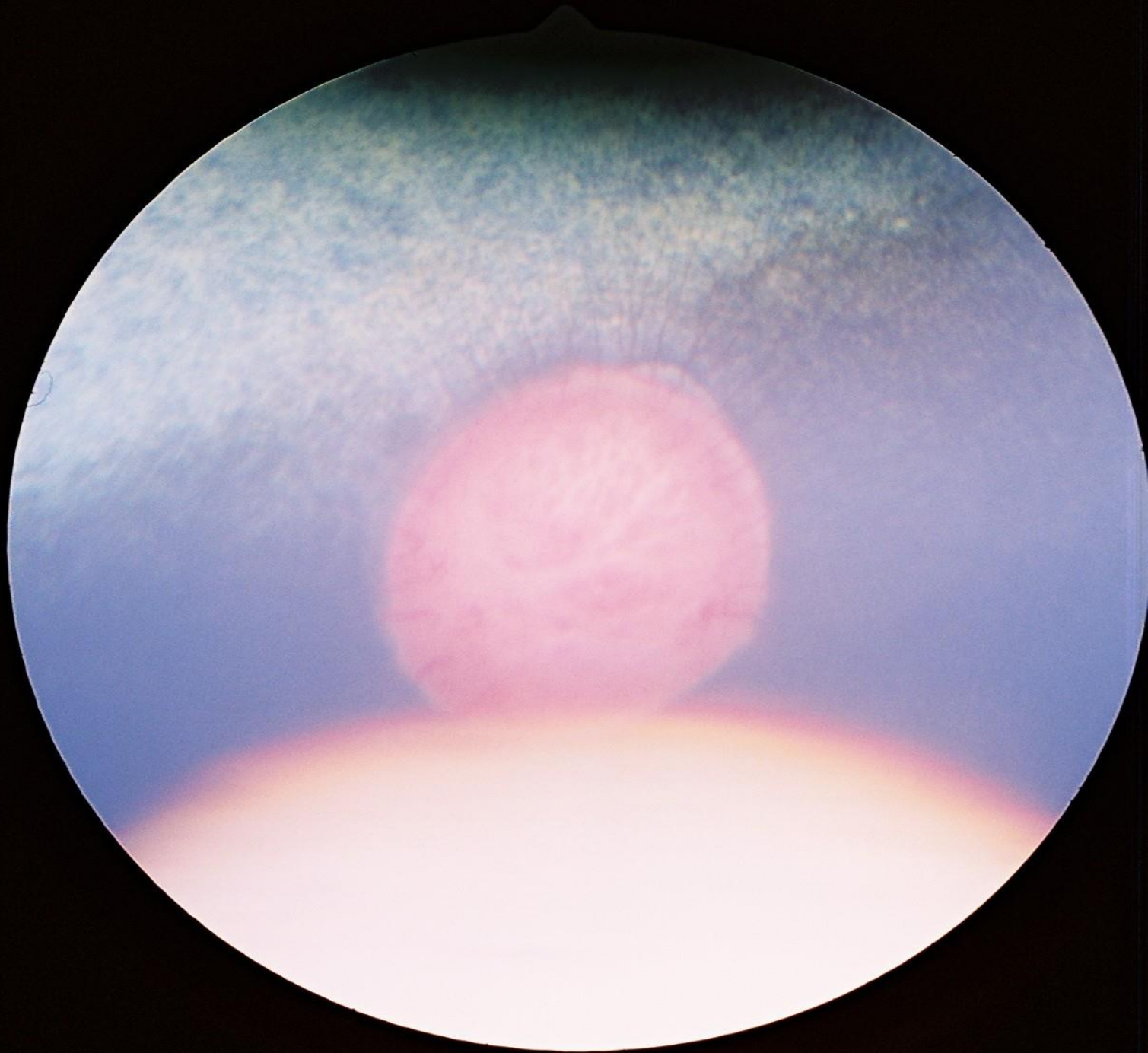
Tapetum

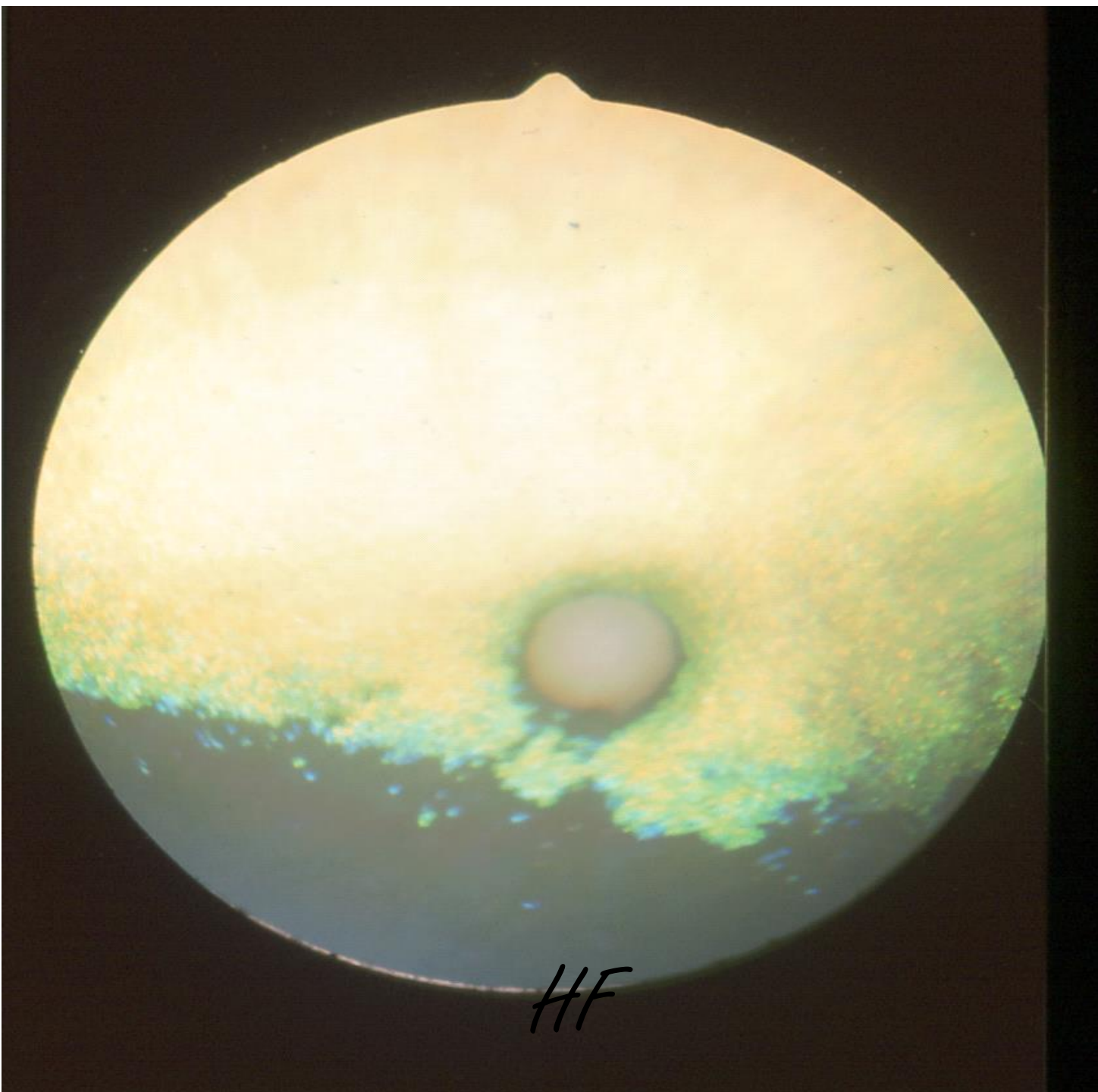




HF







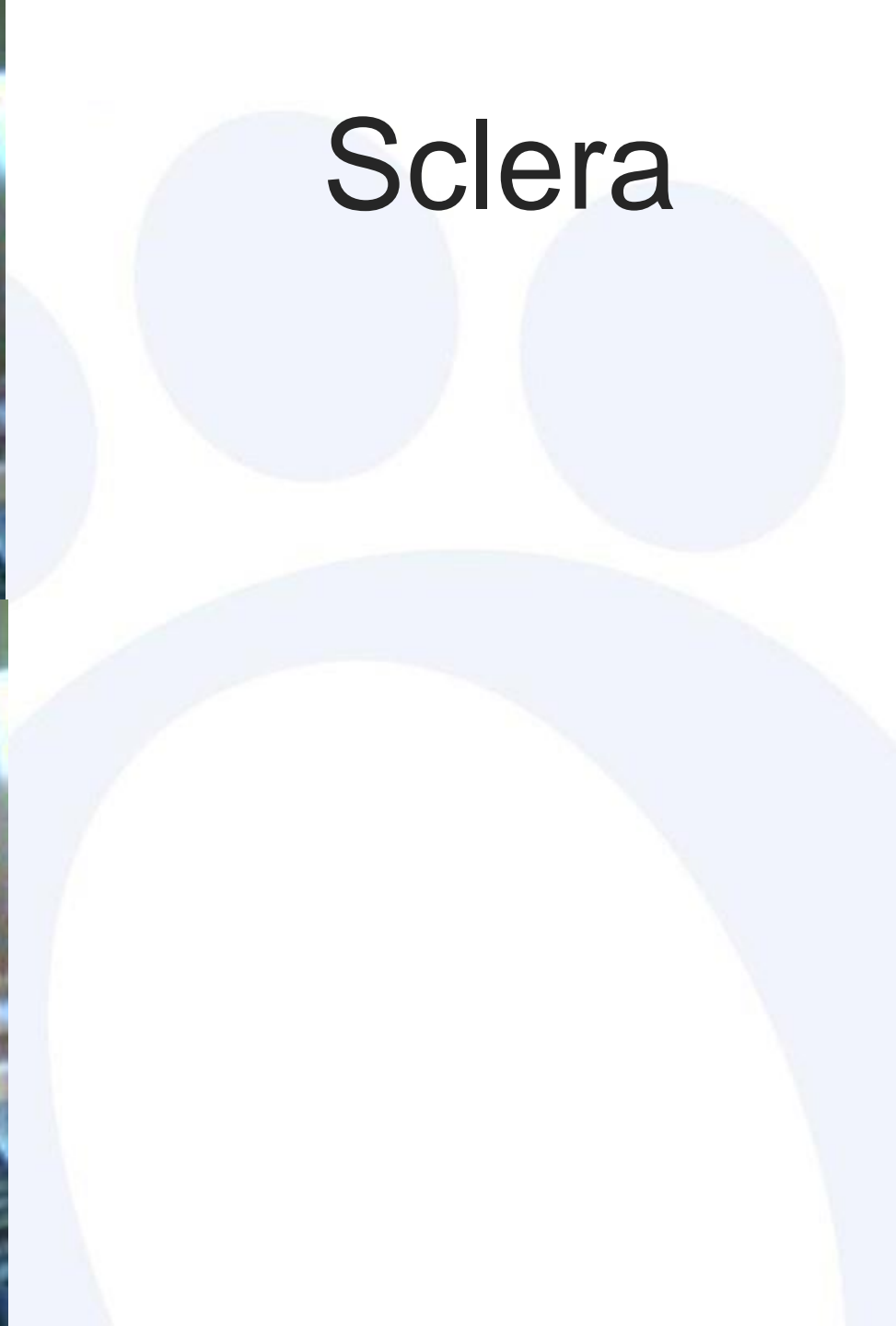
HF

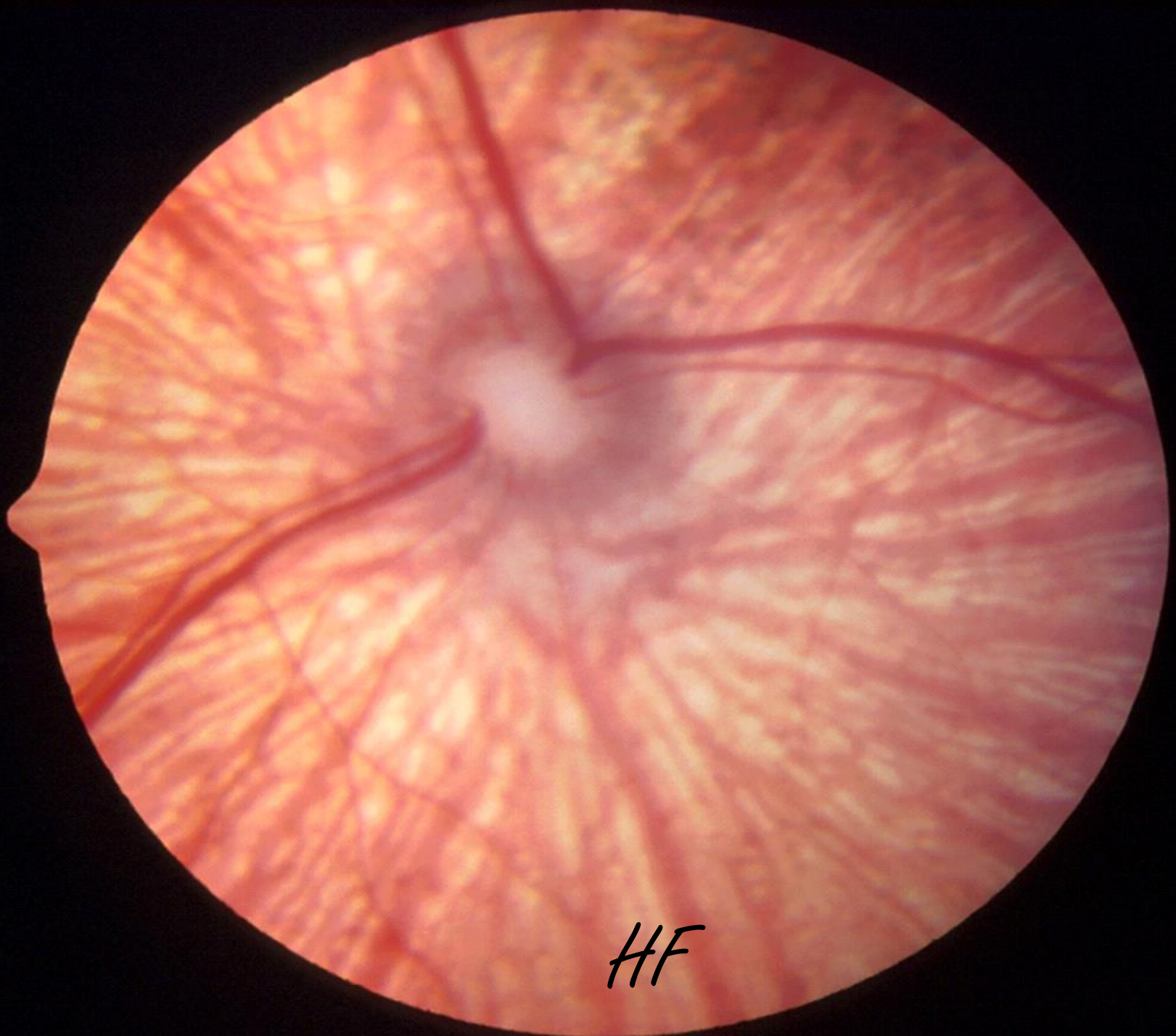
Outside





Sclera





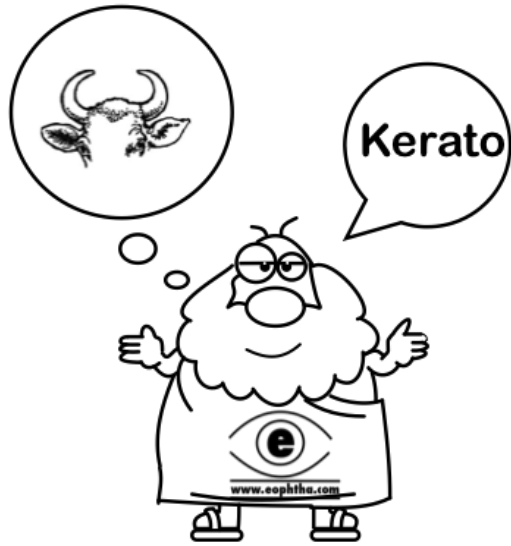
HF



A666X025

R

Cornea - kerato

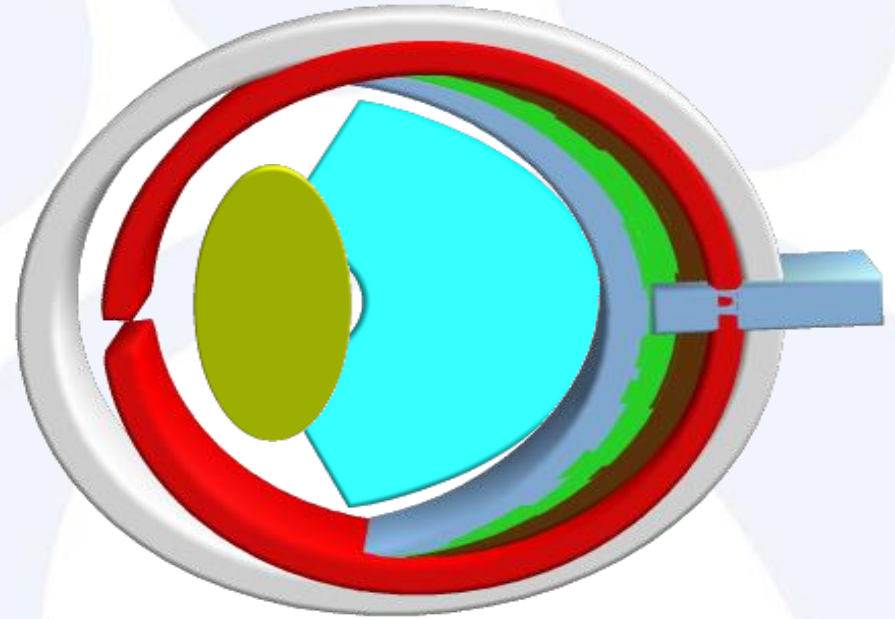


The word cornea has come from "Kerato". The term "Kerato" in greek means horn or shield like. Ancient Greek used to believe that cornea is derived from same material like that of thinly sliced horn of animal.





The B side



The lens

