



Rowe

Referrals

OPHTHALMOLOGY

IVC New Graduate academy

Timknott@rowevetgroup.com

07782219868



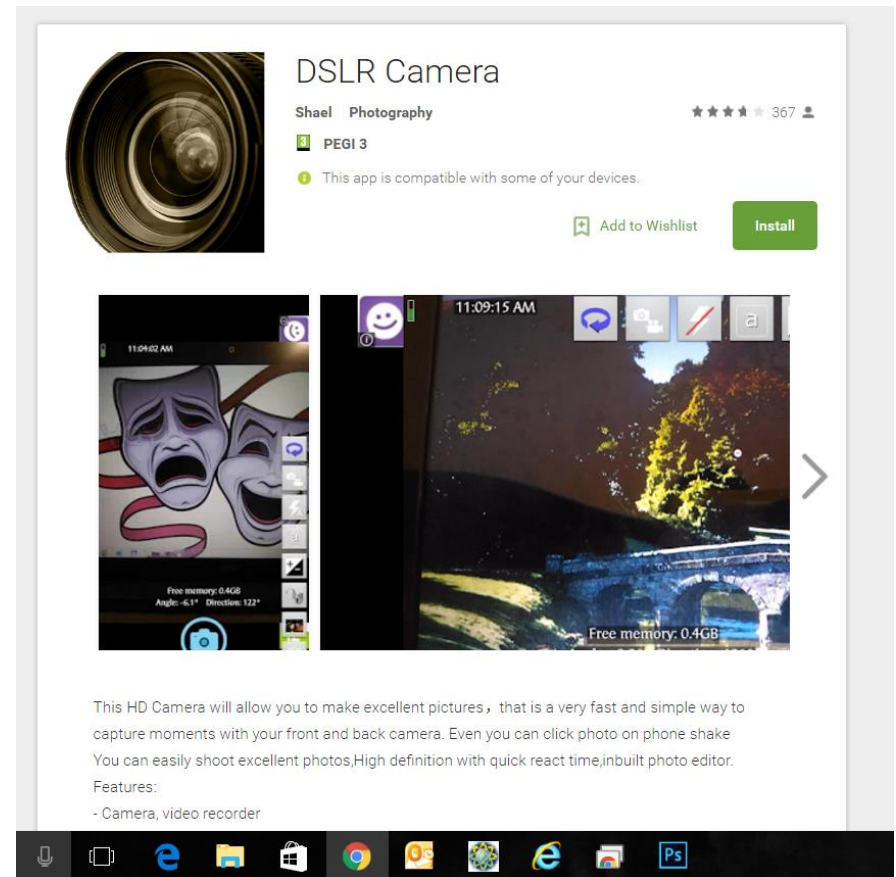
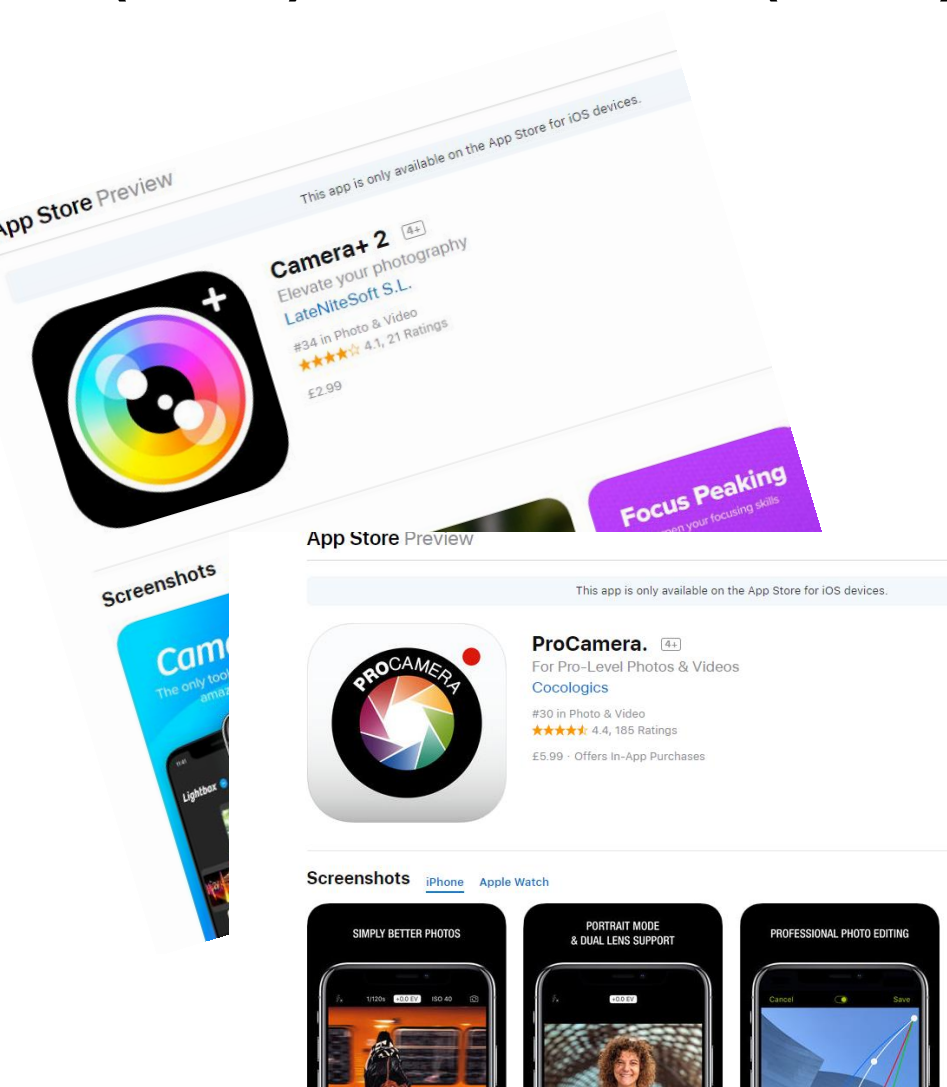
Before we start

iPhone users:

**Camera + 2 (LateniteSoft)
(£2.99) or Procamera (£5.99)**

Android users:

DSLR Camera (Shael) free





CALL US ON:
[01454 521000](tel:01454521000)

- What do we do? ▾
- Careers
- Case Studies
- Rowe Vet Group
- Contact Us



Rowe Referrals

Providing veterinary excellence to the South West

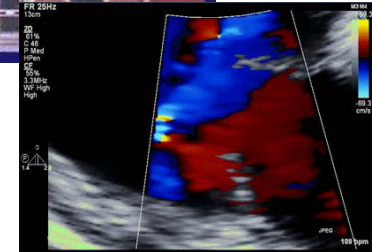
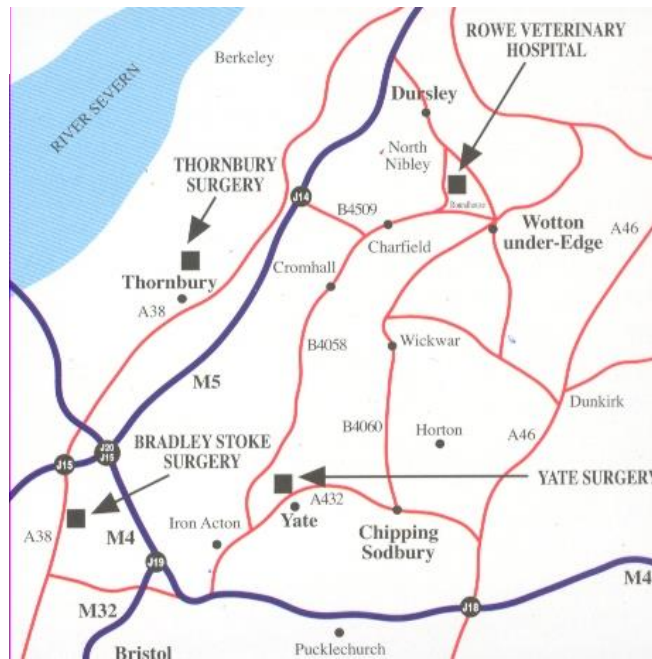
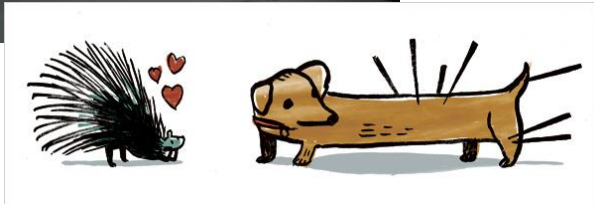
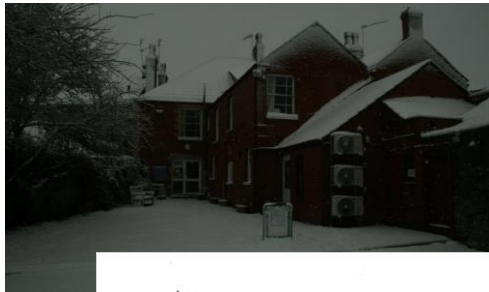
Ophthalmology	Orthopaedics
Soft Tissue & Spinal Surgery	Laparoscopy
CT Scanning	MRI
Ultrasound	Internal Medicine
Radioactive Iodine	Dermatology
Outpatient Eye Clinics	Health Schemes
Acupuncture	

Rowe

Referrals



Serving the South West & beyond





Radioactive Iodine Unit

Mr Ian Jennings

Mrs Liz Jennings

Ms Hilary Varlow

- **2 week stay**
- Air conditioned / temperature controlled facilities
- Television for visual stimulation
- Audio tracks specially geared towards cats unique hearing range
- 24 hr surveillance

For more info:

www.RoweReferrals.co.uk

01453 843295 DD





High Field MRI

Mr Ian Jennings Cert Vet VDI

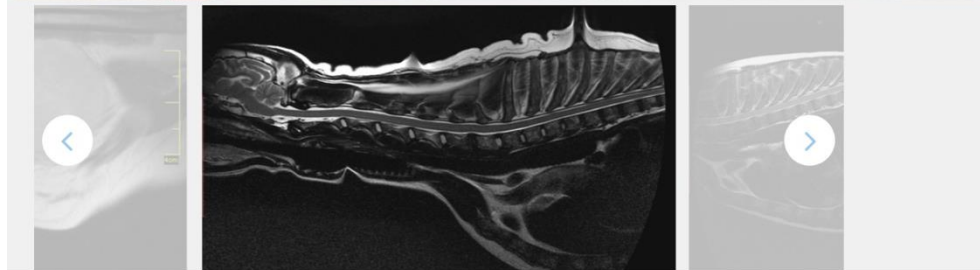
Based at our Wotton Hospital

1.5 Tesla High field scanner



Magnetic Resonance Imaging

A further look inside your pet



CT Scanner

Based at our Bristol Hospital



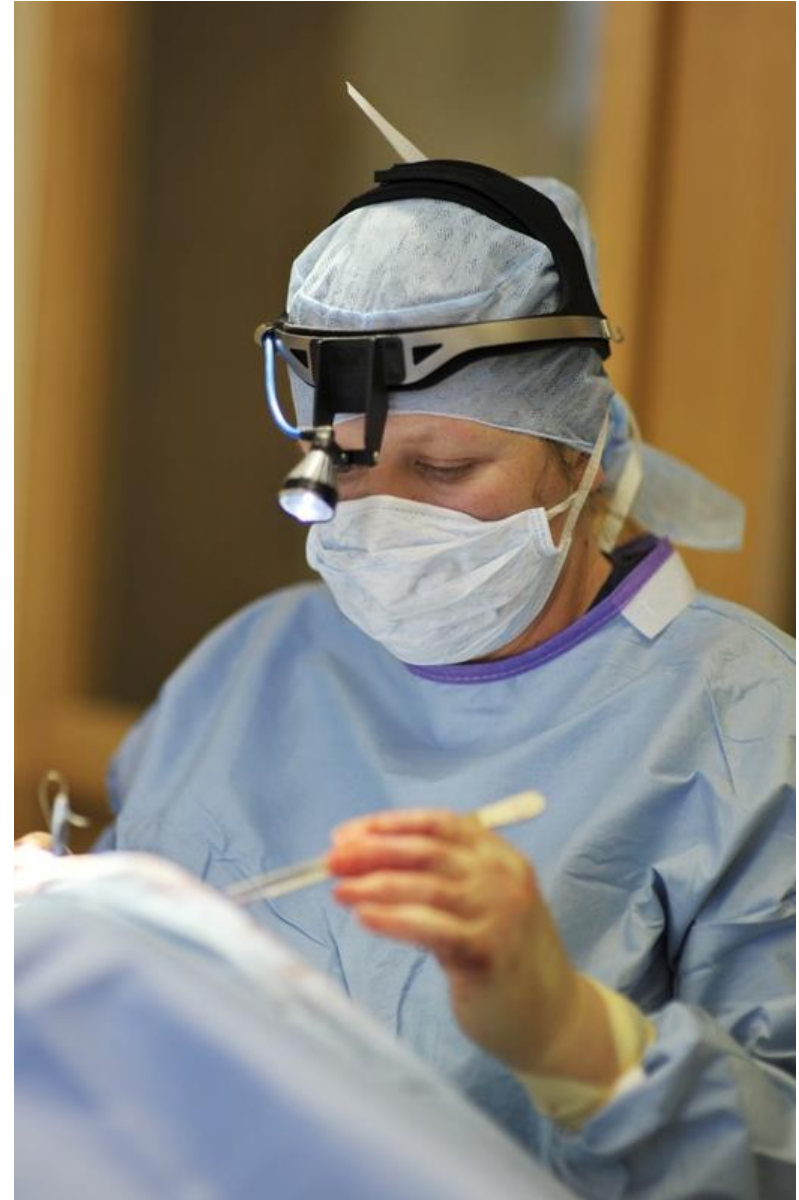
CT Scanning

Taking a further look into your pet



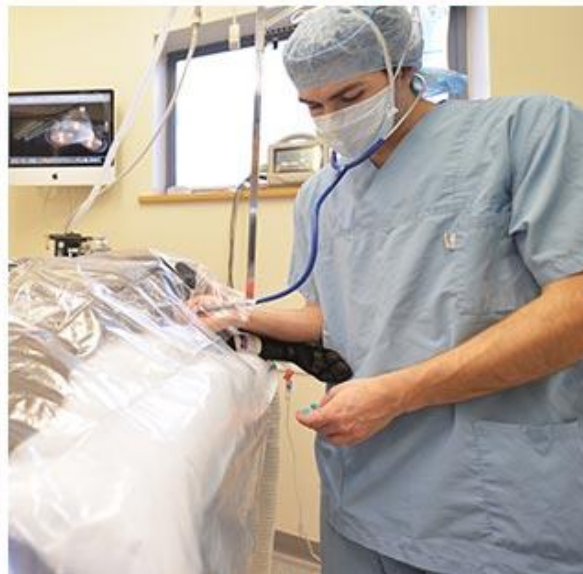
SOFT TISSUE & SPINAL SURGERY

Elisa Best: Referrals@rowevetgroup.com



ORTHOPEDIC SURGERY

Mr Mark Owen:





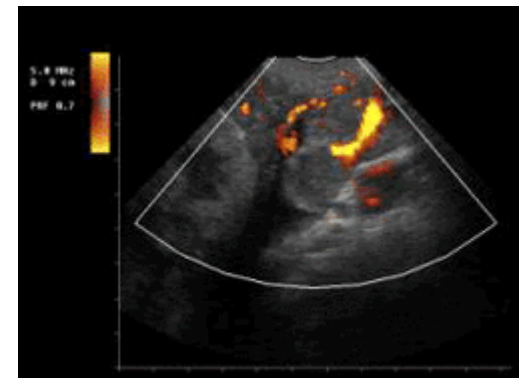
Dermatology

Peri Lau-Gillard *DrMedVet*
CertVD DipECVD MRCVS
European Specialist in
Veterinary Dermatology



Ultrasound

Margaret Costello *MVB, DVR,*
Dip.ECVDI, MRCVS. RCVS
and European Specialist in
Diagnostic Imaging







Ophthalmology

Dealing with a range of ophthalmic cases



David Nutbrown-Hughes
BVSc CertVOphthal MRCVS
Veterinary
Ophthalmologist



Hamish Cormie
BVMS CertVOphthal MRCVS
Veterinary
Ophthalmologist



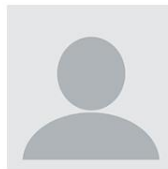
Ines Freitas
MRCVS
Veterinary
Ophthalmologist



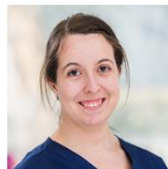
James Rushton
MS PhD MRCVS
Veterinary
Ophthalmologist



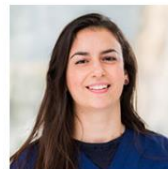
Judite Carvalho
DVM MRCVS
Veterinary Ophthalmology
Intern



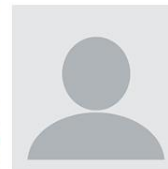
Magda Huelle
CertVOphthal MRCVS
Veterinary
Ophthalmologist



Michaela Wegg
BVSc MRes MRCVS
Veterinary Ophthalmology
Intern



Thea Timotheou
MRCVS
Veterinary
Ophthalmologist

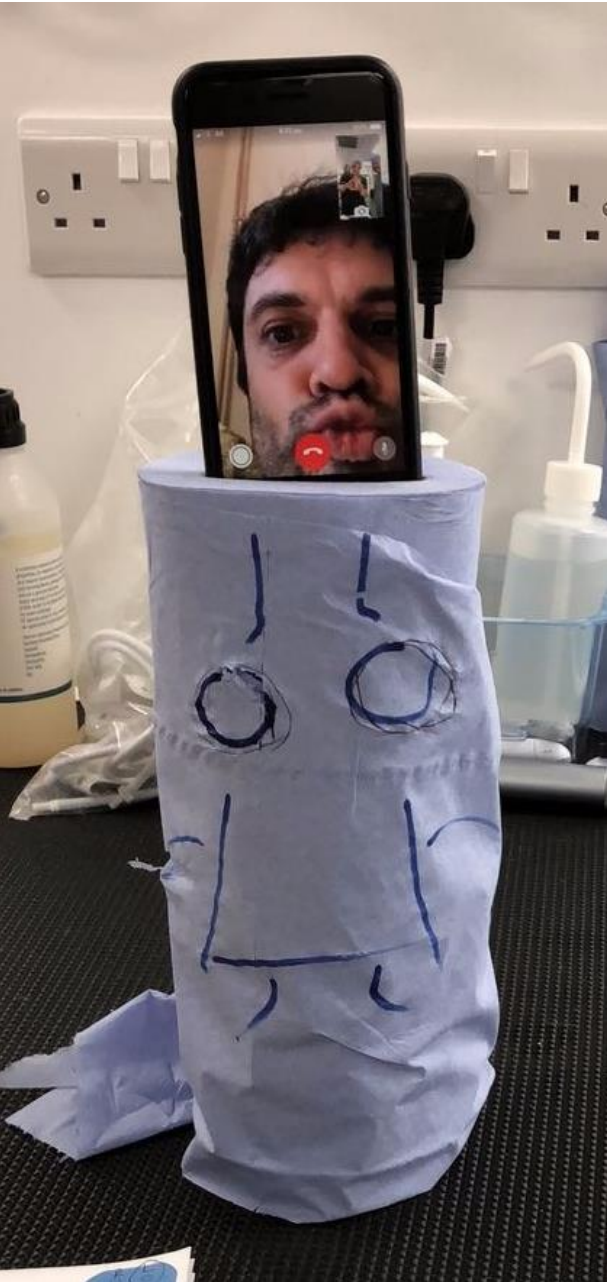


Tim Knott
BSc (Hons) BVSc
CertVOphthal MRCVS
Veterinary
Ophthalmologist



Meet the Team







www.EquineEyeClinic.co.uk

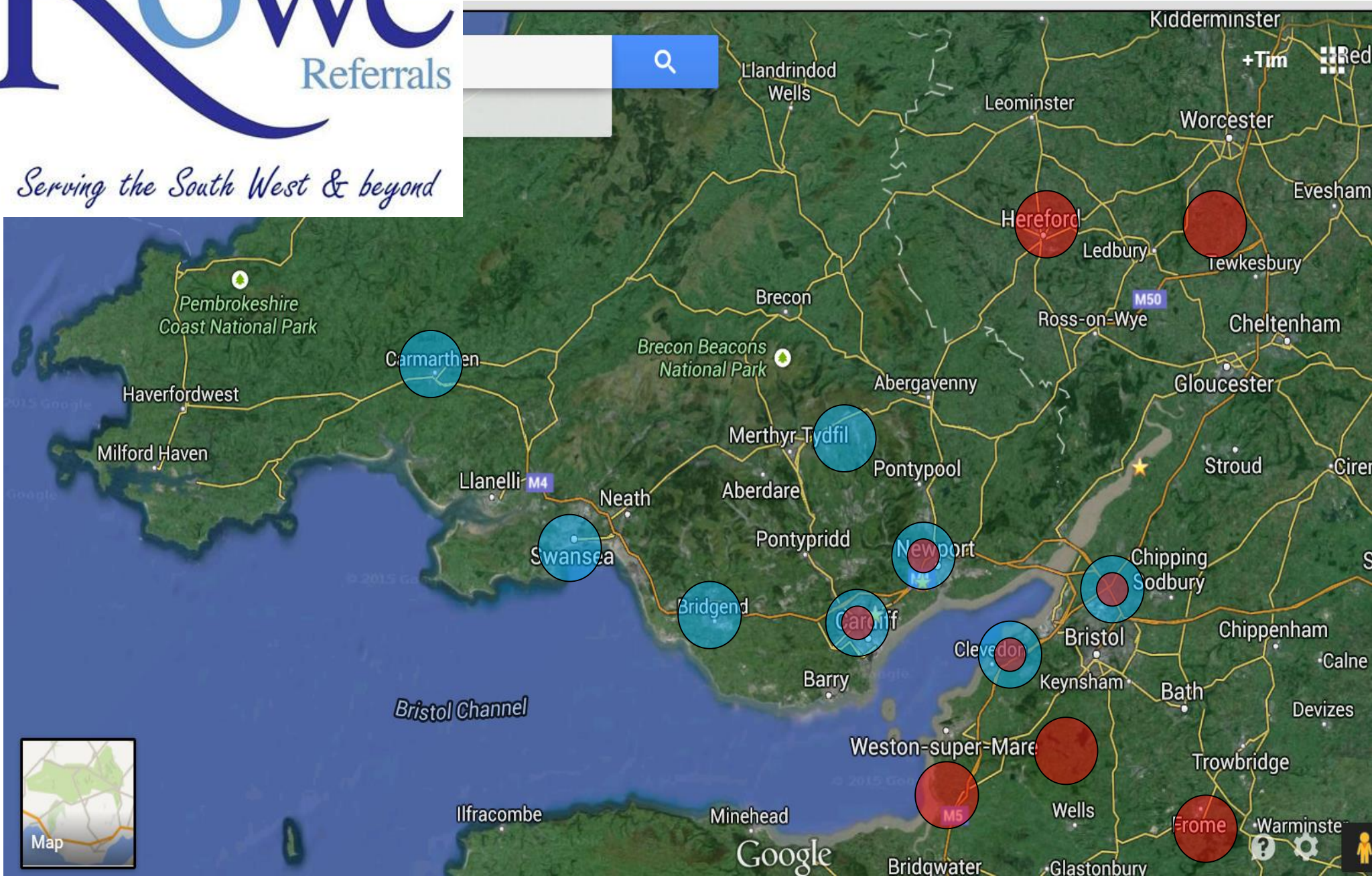
The Equine Eye Clinic





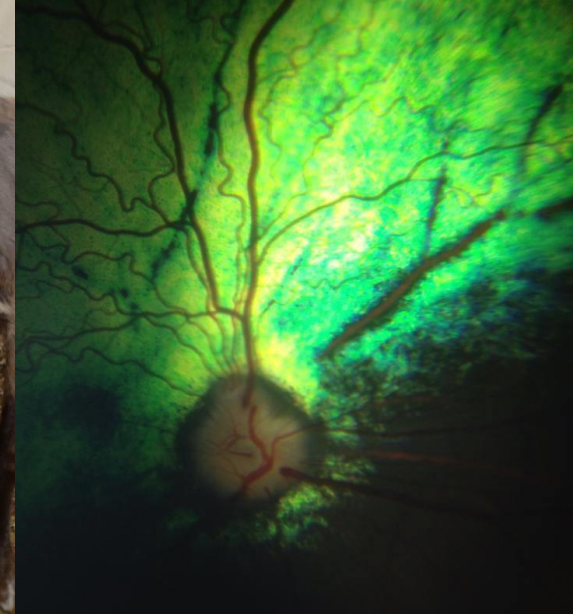
Serving the South West & beyond

Eye Clinics



Visit the clinic





 Find us on
Facebook



The Gift of Sight Fund

DOGS WHO BENEFITED FROM THE GIFT OF SIGHT FUND IN 2014

Each dog we help by giving them sight costs around £2,000 including all the eye drops etc - and all but two of the dogs below have had this done so although we have raised a wonderful amount this year as you can see it doesn't cover the amount the operations have cost. If you would like to help us give a dog the Gift of Sight please click the donation button above and write "THE GIFT OF SIGHT" where it says "enter description".

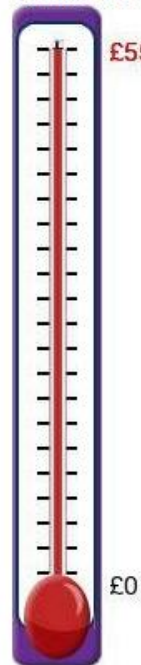
AMOUNT DONATED
21-09-14



DOGS WHO BENEFITED FROM THE GIFT OF SIGHT FUND IN 2013

AMOUNT DONATED
Jun-Dec 2013

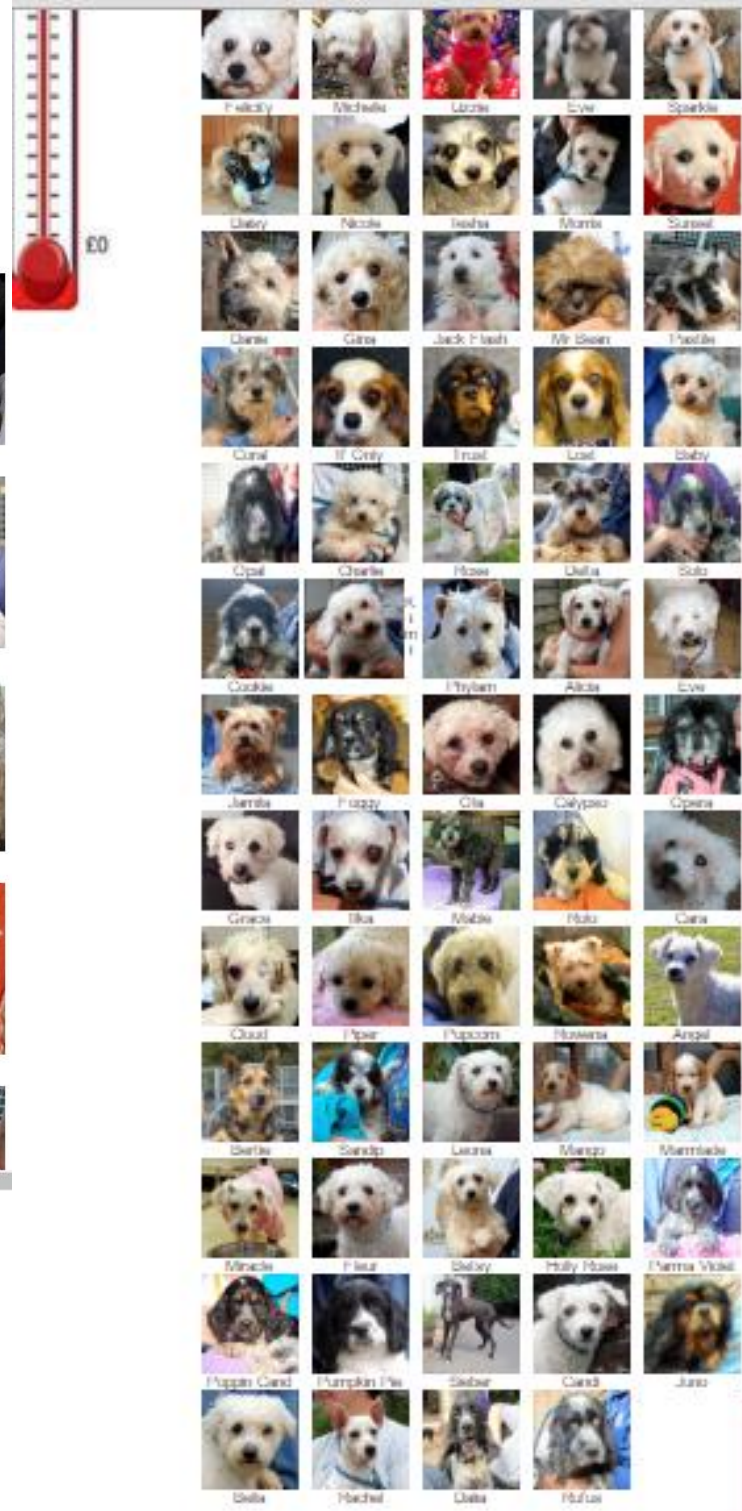
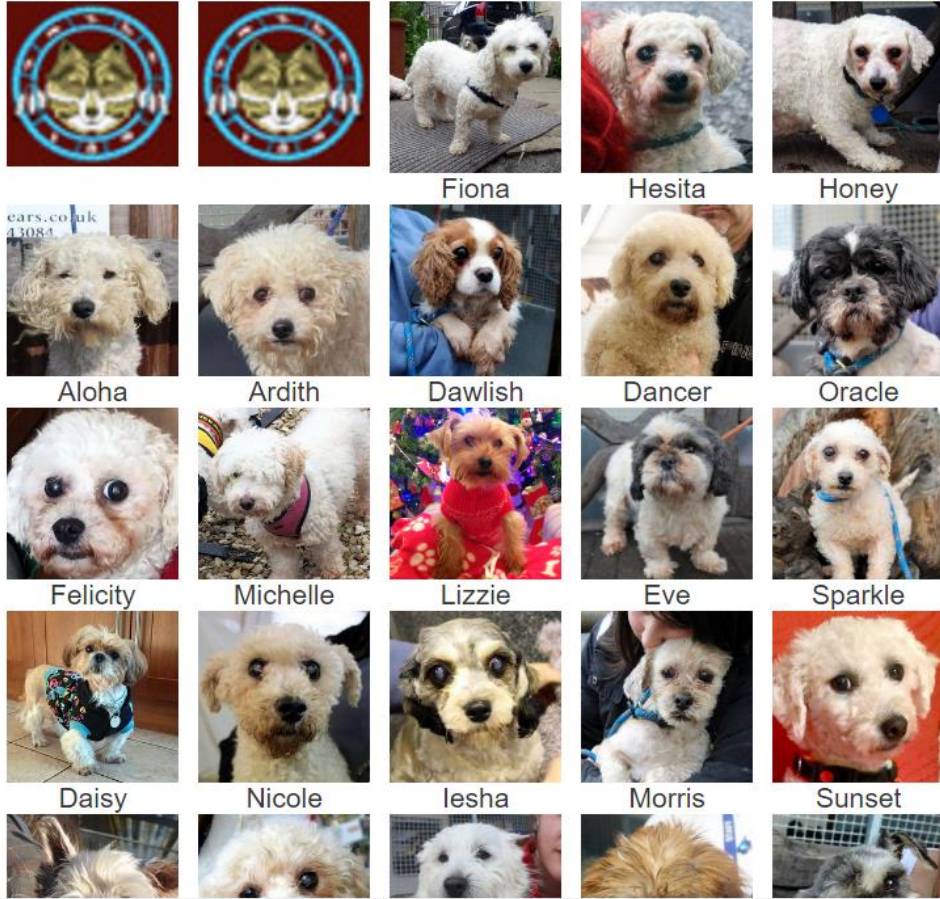
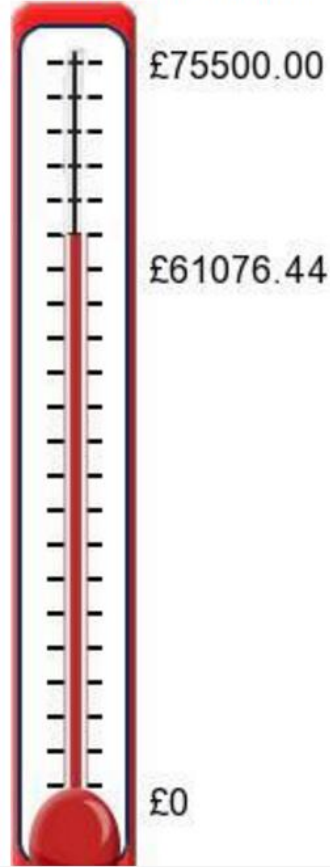
£5524.84



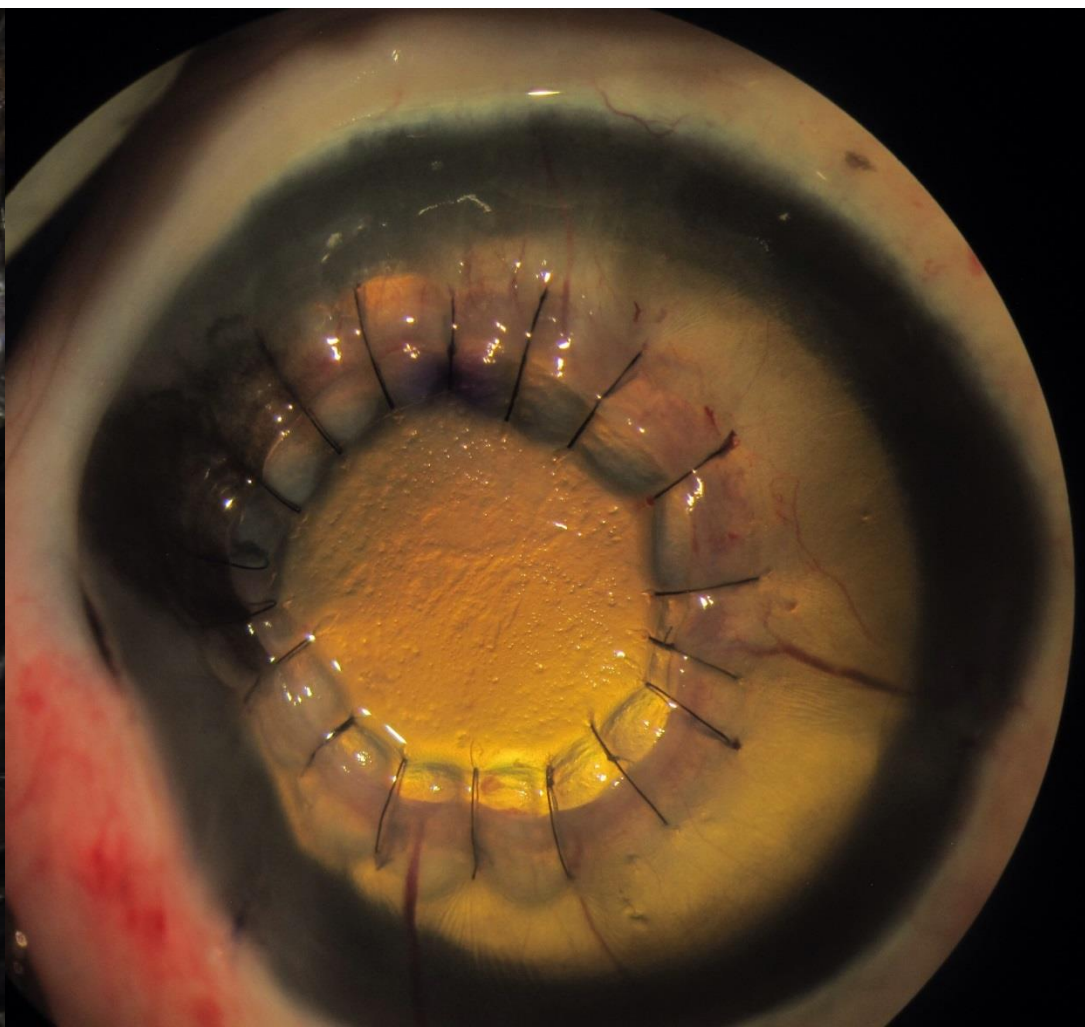
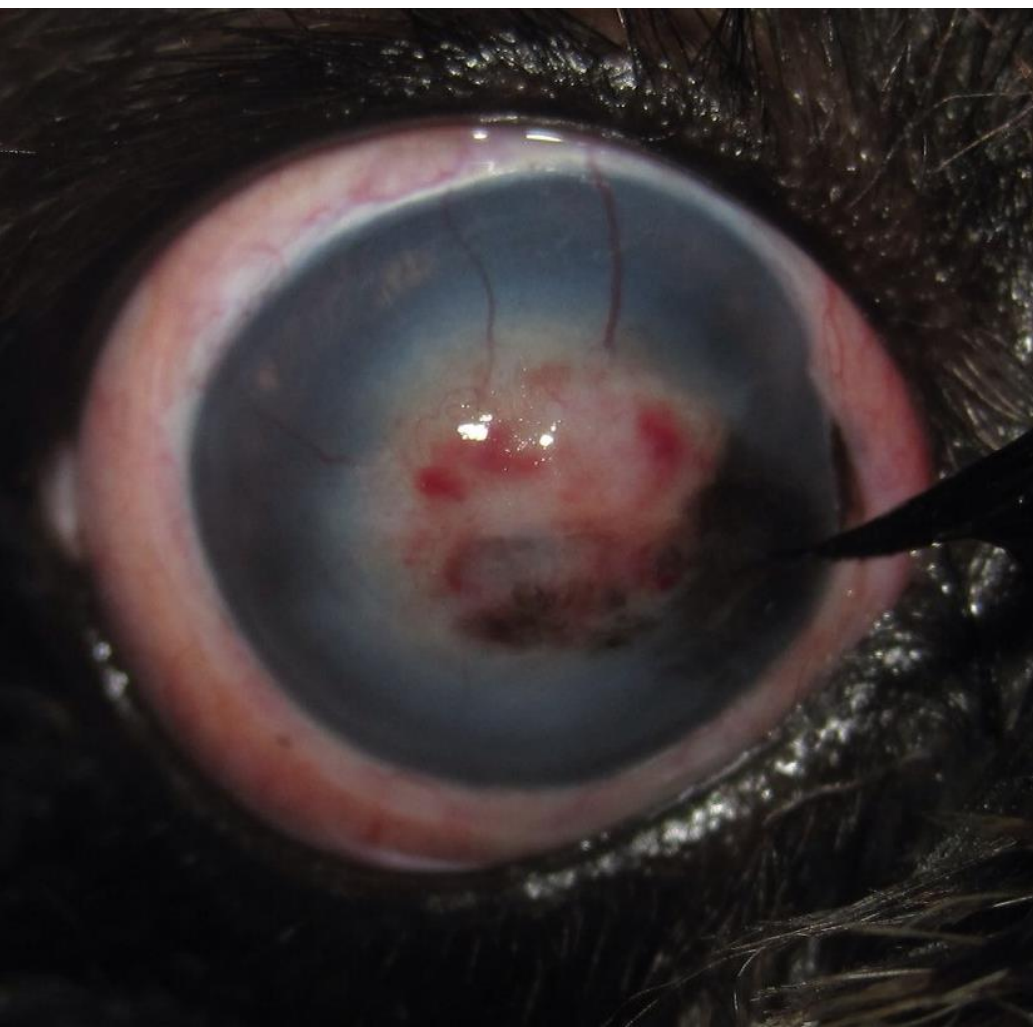
DOGS BENEFITTING FROM THE GIFT OF SIGHT FUND SINCE 2014

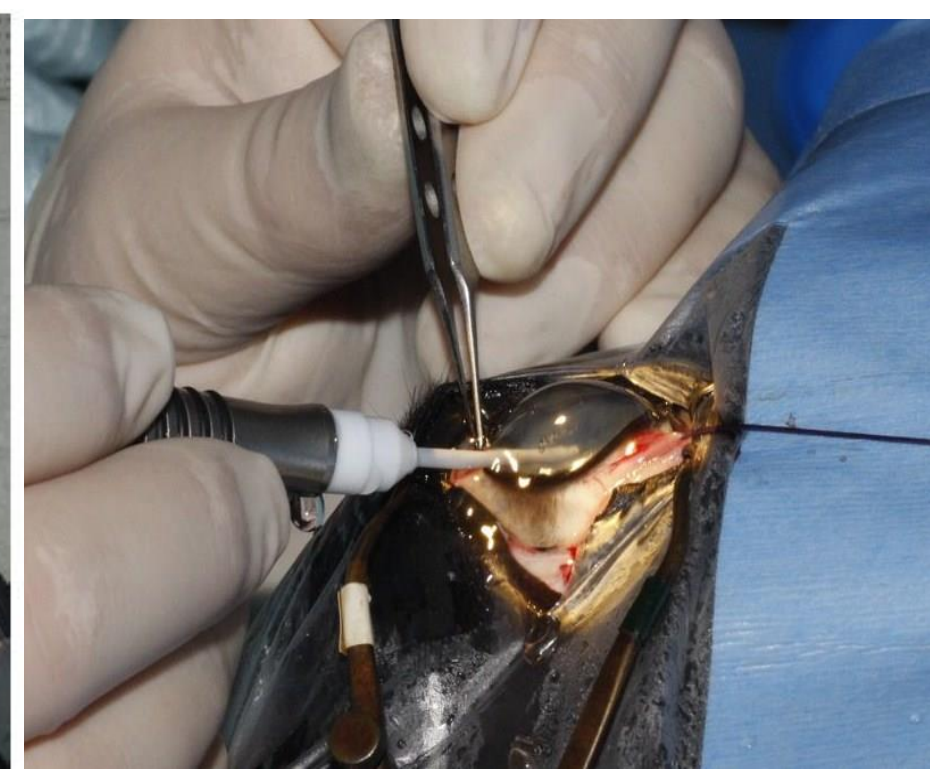
Each dog we help by giving them sight costs around £2,000 including all the eye drops etc. Below are some of the dogs able to have operations to restore their sight or have seen a specialist to ascertain if anything could be done. Although we raised a wonderful amount in as you can see it doesn't cover the amount the consultations and operations cost. If you would like to help us give a dog the Gift of Sight please click the donation button above and write "THE GIFT OF SIGHT" where it says "enter description".

UPDATED 28/06/16



Corneal Donor Scheme: Bow's story





eyes@rowvetgroup.com
timknott@rowvetgroup.com
01454 521000
07782219868



Meet our patients...

Horses, alpacas & geese!



But mostly..





EXAMINING THE EYE

OPHTHALMOSCOPY

IMAGING THE EYE

LUNCH

MANAGING CORNEAL DISEASE

+/- RECOGNISING INTRAOCULAR DISEASE

Reasons to do an eye examination



Systemic disease

Common

Unforgiving

Good owner compliance -
Anthropomorphize!

Completes the
examination

Marker for CNS dz

Systemic disease:

Direct visualization of
vasculature

- retinal
- Sub conjunctival

Nervous tissue

- White
- Grey

Lymphoid

- Iris
- conjunctival

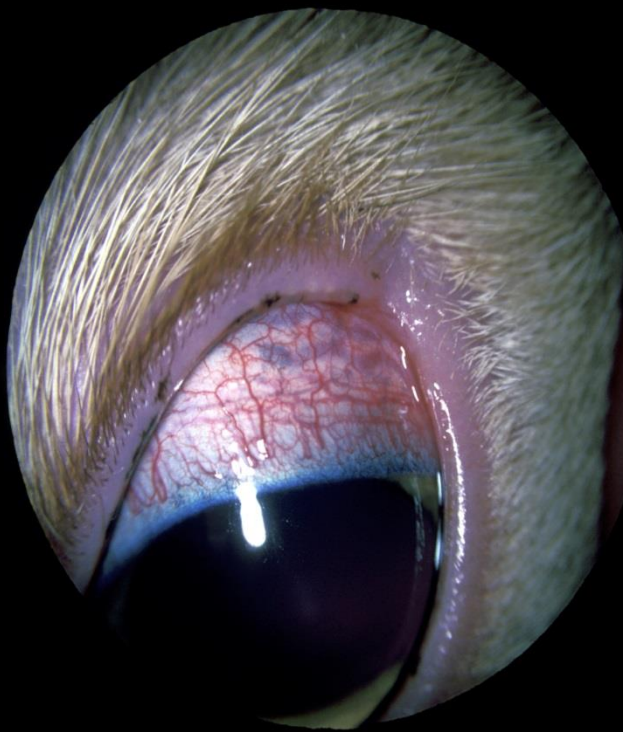
Vasculature

Superficial Blood vessels

- Hypertension
- Anaemia
- Polycythemia
- Vasculitis
- Trauma
- Lipemia

Choroidal blood vessels

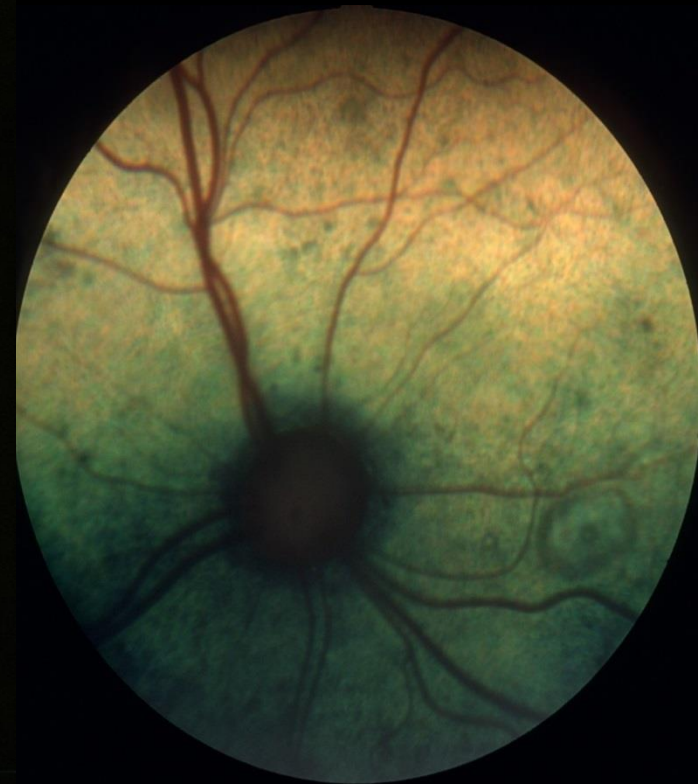
- Hypertension
- Chorioretinitis



Vasculature

Superficial Blood vessels

- Hypertension
- Anaemia
- Polycythemia
- Vasculitis
- Trauma
- Lipemia



Choroidal blood vessels

- Hypertension
- Chorioretinitis



Sheila Crispin

Where is the eye's lymph node?

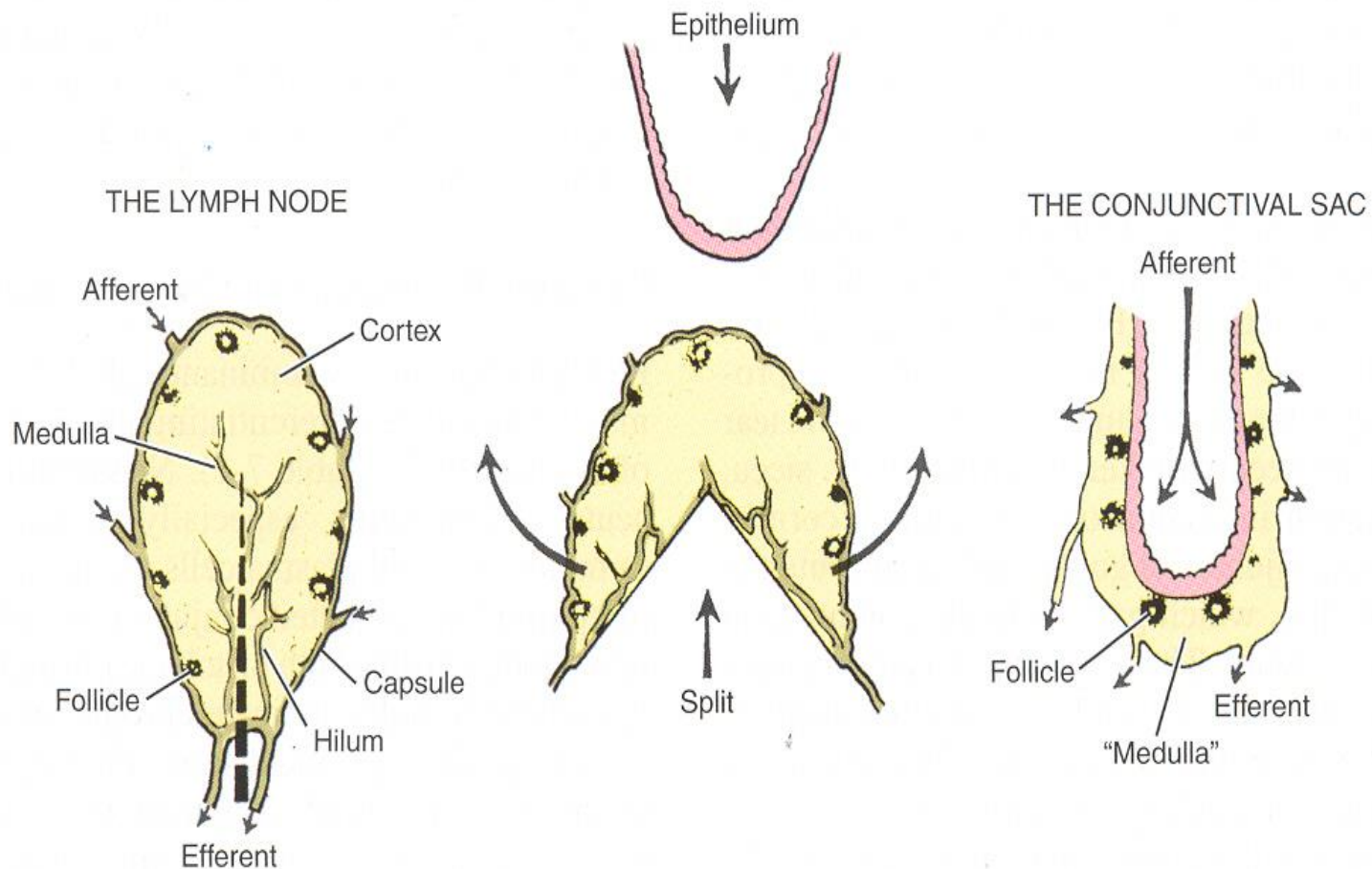


Figure 7-3. The relationship between a lymph node and the conjunctival sac. (Modified from Duke-Elder S [1965]: System of Ophthalmology, Vol 8, Part II. Henry Kimpton, London.)

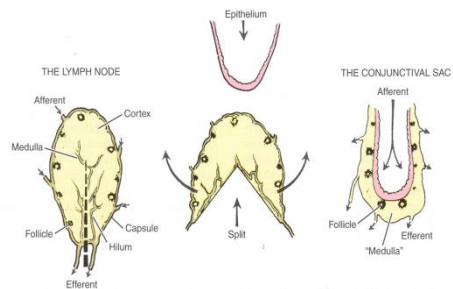


Figure 7-3. The relationship between a lymph node and the conjunctival sac. (Modified from Duke-Elder S [1965]: System of Ophthalmology, Vol 8, Part II. Henry Kimpton, London.)

Follicular conjunctival hyperplasia

- Chlamydophila
- (FHV)
- (allergy)



Veterinary Ophthalmology



Get an ophthalmoscope

Pen torch – always have one – think of it like your stethoscope

Diagnostic lens (£25 from VSP – need no batteries!)

Ophthalmoscope

pen type £65-125

professional £220-350

cheap combi sets from £45

cheap directs from £20



& practice

Every patient you examine should have it's eyes checked

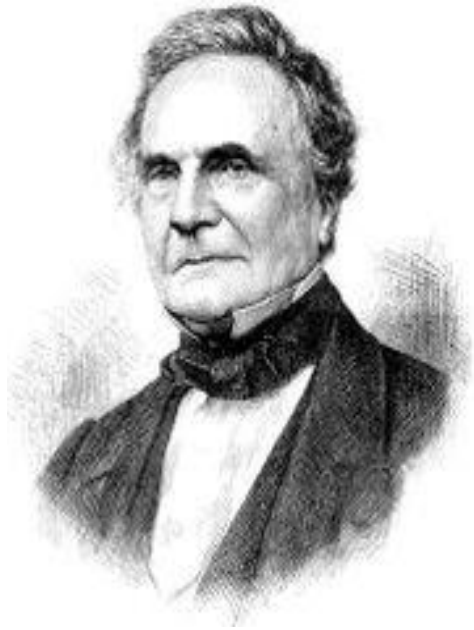
You don't need equipment for the large part of the eye exam.

A pen torch alone fills in most of the remaining gaps

A diagnostic lens +/- or a direct ophthalmoscope will fill in the final ones.

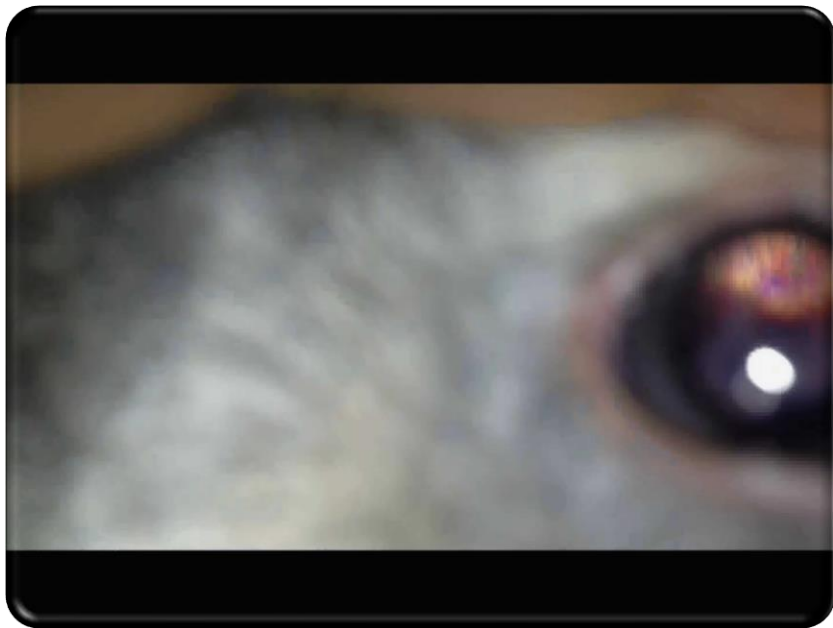
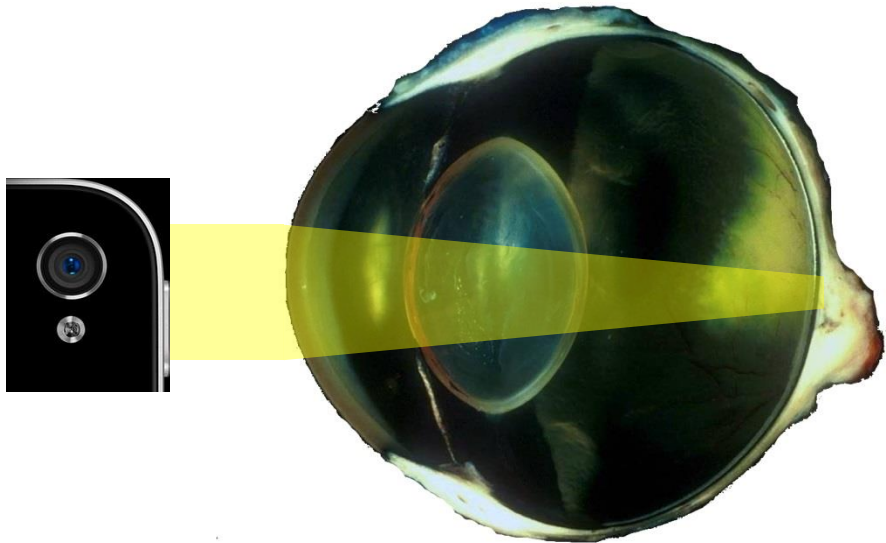


Charles Babbage



Smart phone

www.theeyephone.com

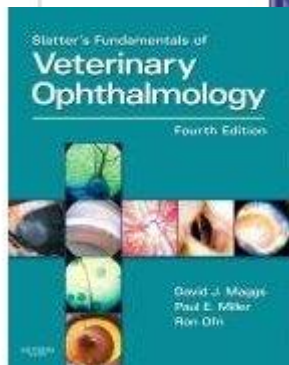
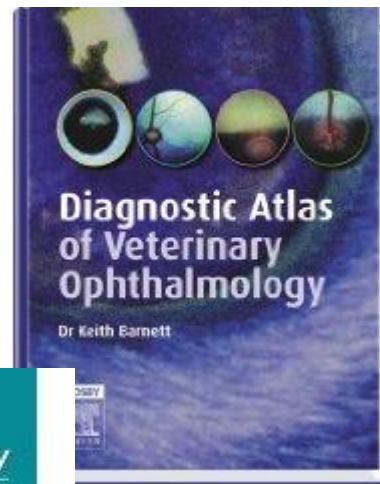
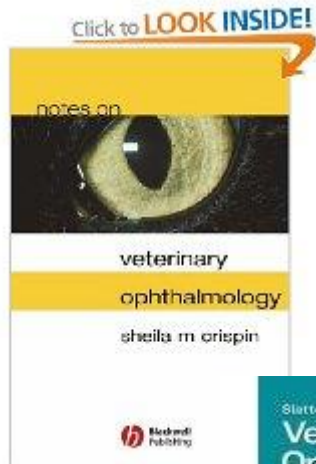


Veterinary Ophthalmology

Get a good book

BSAVA manual

Slatter's Fundamentals of
Veterinary Ophthalmology



Ask for help

Come & see practice

Get a camera and learn how to
use it.

eyes@rowevetgroup.com

timknott@rowevetgroup.com

01454 521000 clinic number

0778 2219868



Rowe
Referrals



BEVA



www.BrAVO.org.uk
Autumn meeting
Equine Ophthalmology
9-11 November



International Equine
Ophthalmology Consortium

www.equineophtho.com

Aims for today

Examination of the eye

Practical approach to examining the ophthalmic patient.

Use distant direct ophthalmoscopy to find opacities in the visual axis.

Use Parallax & the “Search light” technique to localise lens lesions.

Use Close direct & indirect ophthalmoscopy to examine the retina.

Learn how to photograph intraocular structures.

Corneal disease

Understand how the cornea is put together.

Understand how corneal healing works.

Understand what causes non-healing ulcers.

Be able to recognise deep corneal ulcers and perforations.

Intraocular disease

Recognise uveitis, glaucoma & cataract

Please ask for help..

www.facebook.com/roweeyeclinic

www.facebook.com/equineeyeclinic

www.theeyephone.co.uk

eyes@rowevetgroup.com

